



LA TROBE
UNIVERSITY



Olga Tennison
Autism Research Centre

ANNUAL REPORT 2021

Olga Tennison Autism Research Centre

Vice Chancellor's message



I commend the staff, supporters and partners of the Olga Tennison Autism Research Centre (OTARC) on their achievements during what was a very challenging year in 2021.

Despite the COVID-19 pandemic presenting many challenges for the Centre's staff to undertake their research and program activity for a second consecutive year, the OTARC team managed to be very productive while working remotely for much of 2021. The Centre continued to make impressive headway on its research projects and its programs to support early detection and diagnosis and support, and employment and wellbeing for people with autism.

OTARC exemplifies what the University hopes to achieve through the work of its Research Themes, particularly our research program on 'Healthy people, families and communities'. The Centre provides evidence to support programs that are widely used in the community, as well as playing an important role in advocating for people with autism and their families. OTARC makes significant contributions to inform policy including its submission to the Standing

Senate Select Committee on Autism, which was followed by a visit to campus by two members of the Australian Senate in 2021 to see OTARC's work firsthand.

I hope that OTARC's work will gradually return to normal as we emerge from the COVID-19 pandemic in the months ahead. The Centre will be well placed for future success following the appointment of former La Trobe University Chancellor Professor Richard Larkins AC as its new Patron.

Finally, everyone at the University was saddened by the death of OTARC's generous benefactor, Olga Tennison, in early 2021. We have now announced the extraordinary \$45 million gift that Olga left to the University in her estate. Olga's incredibly generous bequest means that her memory will live on in OTARC's work to improve social, economic and community participation and inclusion for people with autism. Most importantly, it will support OTARC to continue its work to benefit people with autism and their families for many years to come.

Professor John Dewar AO

Vice-Chancellor

Director's message



2021 was, again, dominated by Covid-19 with much time spent working from home. Despite this, and shrinking slightly in our numbers, we had another productive year, with over 40 research projects underway. Based on our research, we made many submissions over the year to inform policy with regards to supporting autistic individuals from infancy to adulthood, with the Standing Senate Select Committee on Autism being one example.

A significant boost to our team was the long-awaited appointment of Deputy Director, Professor Alison Lane. Alison, who is an Occupational Therapist, joined us in February. She has over 25 years of experience in paediatric clinical practice and health services management, with a strong research focus on sensory processing and sensory subtypes.

We also welcomed Professor Richard Larkins as OTARC Patron. In addition to being La Trobe's former Chancellor, Professor Larkins was Vice Chancellor of Monash University, and also the James Stewart Chair of Medicine at the Royal Melbourne Hospital. He was also

formerly Dean of the Faculty of Medicine, Dentistry and Health Sciences at the University of Melbourne, and has for some time served on the Board of the Ian Potter Foundation.

Three of our staff were successfully promoted in 2021 with congratulations to Associate Professor Josephine Barbaro, Dr Nancy Sadka and Dr Simon Bury. Professor Amanda Richdale retired at the end of 2021 having made significant contributions to the field over many years. Mandy has been a dedicated member of our staff at OTARC since its early days. I am glad that she will continue with us, in a reduced capacity, as an Adjunct Professor.

2021 was also the year that we lost our dearest benefactor and namesake, Mrs Olga Tennison who, many of you will now know, gifted us an extraordinarily generous bequest upon her passing. Her gift will fund autism research in perpetuity, which bodes well, not just for the field but also for junior scholars who are beginning their journey into autism. Olga's gift assures the sustainability and longevity of our Centre.

Professor Cheryl Dissanayake

Director and Chair, Olga Tennison Autism Research Centre

Professor Amanda Richdale retires after 34 years of research

What is your proudest achievement in research?

"This would be my sleep research - publishing my review on sleep in autism in 1999 and my other early sleep publications, which include some about sleep issues in other developmental disorders and intellectual disability, as well as autism. Researchers in the USA told me at international conferences that this work had inspired their own interest in the field. Through my research I met my American colleague and long-time friend Kim Schreck, and I have other lovely friends and colleagues around the world, especially in North America, including Beth Malow and Terry Katz."

"The other thing I am very proud of is all the Honours, Masters and Doctoral students I have supervised. It was a privilege and a pleasure to work with them and much of the research I am associated with could not have been done without them."



As Adjunct Professor, over the next 3 years I hope to:

Finish my current PhD students

Continue to co-supervise MPsych and Honours students with colleagues Dr Eric Morris and Dr Lauren Lawson.

Continue to investigate the role of psychological flexibility in mental health and insomnia, including interventions for autistic people with Eric and Lauren.

Work on analysing existing sleep and behaviour data from the Social Attention and Communication Surveillance studies with Associate Professor Josie Barbaro and Dr Nancy Sadka.

Analyse sleep and mental health data from the Autism CRC longitudinal studies.

Most of all, I want get back to my art, to garden, read more novels, walk, travel with my husband, spend time with friends, and finish the family history I have potted with for over 10 years. There are too many things to do, not enough time, and my body keeps telling me it is tired more often, which is a nuisance. One lifetime is not enough.

Amanda is a founding staff member at the Olga Tennison Autism Research Centre which she joined in 2009. Prof Richdale completed a PhD at La Trobe University (1993) with Prof Margot Prior and then joined the Dept of Psychology & Intellectual Disability Studies at RMIT University.

Her research interests include autism spectrum disorder, disorders of development, sleep and mental health. Prof Richdale was project leader for the recently completed (June 2021) longitudinal Study of Australian School Leavers with Autism working closely with the Australian Longitudinal Study of Autistic Adults at UNSW (both studies funded by the Autism CRC).

Prof Richdale received an award for services to Autism Victoria (now known as Amaze) in 2007 in recognition of her active service. Prof Richdale co-founded:

- the Autism Victoria Autism Research Group,
- the Australasian Autism Research Alliance,
- the Australasian Autism Research Collaboration and,
- the Australasian Society for Autism Research.

Prof Richdale is an educational and developmental psychologist and was a founding committee member of the Australian Psychological Society special interest group Psychologists in Intellectual Disability and Autism (2009), and is a member of the Australasian Sleep Association Sleep Health Council and committee member.

Students mentored to completion



How would you describe Prof. Richdale as a supervisor?

"Caring, supportive and someone with an impeccable ethical character."

What impressed you about Prof. Richdale?

"Mandy advocated for me and our project against a lot of push back. She will never know how much that meant to me. Mandy is responsible for my career as a psychologist."

Monica Chester - completed a doctoral thesis with Prof Richdale as her supervisor

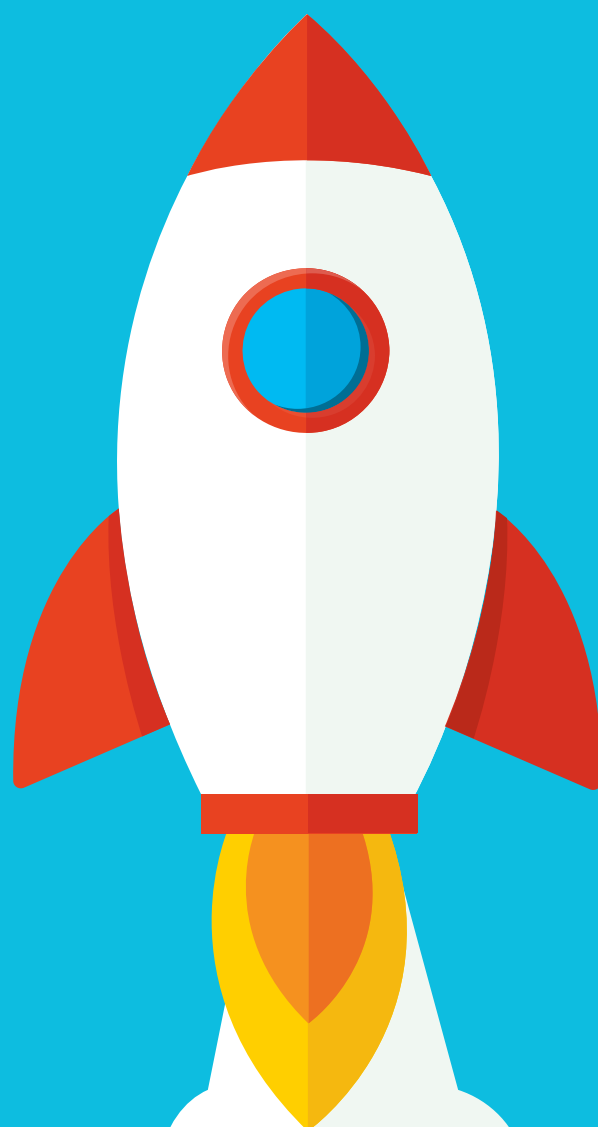
Mission

Through high-quality scientific research, innovation and translation we will expand knowledge to enrich the lives of autistic people and their families.

Contents

At a glance	8
In the media	10
Care	12
Accountable	14
Innovative	16
Connected	19
Industry and community partners	23
Research programs	26
Staff	36
Publications	40
Grants	45
Students	47
Financial report	49

At the Olga Tennison Autism Research Centre, we instigate positive change for autistic people by leading research that enables early identification, diagnosis and intervention, developing and evaluating innovative approaches that enrich the lives of autistic people, training the next generation of outstanding autism scholars and clinicians, generously engaging with stakeholders in research development, knowledge transfer and successful implementation of research findings, and achieving research and operational excellence.



At a glance

Contributions to La Trobe

La Trobe's 3rd largest topic cluster by publication is 'Pervasive Child Development Disorders; Autistic Disorder; Child.'



OTARC members (researchers and affiliates) contributed 49% of La Trobe University's 2021 publications in this area

Topic code	Topic	La Trobe world ranking (%OTARC publications)
T.4324	Autism; Autistic Disorder; Toddlers	1st (100%)
T.3876	Temperament; Parenting; Emotion Regulation	1st (78%)
T.7790	Autism; Autistic Traits; Asperger Syndrome	1st (50%)
T.18425	Asperger Syndrome; Coping Behavior	3rd (100%)
T.12780	Autism; Anxiety; Attention Deficit Hyperactivity Disorder	3rd (78%)
T.1597	Autism; Children with Developmental Disabilities; Autistic Disorder	3rd (50%)
T.6429	Sleep Latency; Autism; Slow Wave Sleep	3rd (80%)
T.9243	Joint Attention; Autism; Autistic Disorder	5th (100%)

188 names on registered volunteer list

27 research students

Research output

51 publications

53 conference presentations and posters

465 media appearances and mentions

5,432 research paper mentions

via Altmetric

Participant registry

723 adults (aged 18+) on participant registry

450 children on participant registry

Engagement profile

www.latrobe.edu.au/otarc

7,073 Sessions - 9,558 Page views - 6,863 Users



In the media

**Our research papers were mentioned in the media
5432 times, a significant increase from 964 in 2020.**

February

Josephine Barbaro

“Investigating gender differences in the early markers of Autism Spectrum Conditions (ASC) in infants and toddlers”
Blog, New York University, Information for practice

Darren Hedley

“Autistic adults’ subjective experiences of hoarding and self-injurious behaviors”
Blog, New York University, Information for practice

Lacey Chetcuti, Darren Hedley

“Temperament in individuals with Autism Spectrum Disorder: A systematic review”
Blog, Physician’s Weekly; Blog, New York University, Information for practice

March

Melanie Muniandy, Lauren Lawson, Amanda Richdale

“Factor structure and psychometric properties of the Brief COPE in autistic older adolescents and adults”
Blog, New York University, Information for practice

Amanda Richdale, Nancy Sadka, Josephine Barbaro

“Behaviour, cognition, and autism symptoms and their relationship with sleep problem severity in young children with autism spectrum disorder”
Blog, New York University, Information for practice

Alison Lane

“The autism spectrum”
Wellbeing (podcast), 2NUR

July

Amanda Richdale (interview)

“Autistic children’s sleep problems linked to behavioral regulation issues”
Spectrum news
By Michael Marshall

Simon Bury (mentioned)

“I struggled with office life. Now others are alive to benefits of remote working”
The Guardian
By Angela Lashbrook

August

Perrin Date

“The Cost of Raising Individuals with Fragile X or Chromosome 15 Imprinting Disorders in Australia”
MedicalXpress

Rachel Jellett

“Implications of Applying ‘Clinically Significant Impairment’ to Autism Assessment: Commentary on Six Problems Encountered in Clinical Practice”
Psychology Today

Simon Bury

“Businesses coached to support workers with autism”
Interview for ABC News Radio - National
By Nas Campanella

Simon Bury

“Autism in the workplace”
Interview for ABC Radio Hobart – Drive program

September

Josephine Barbaro, Lacey Chetcuti, Cheryl Dissanayake, Nancy Sadka

“Effect of Preemptive Intervention on Developmental Outcomes Among Infants Showing Early Signs of Autism”
Recommended by Faculty Opinions
14 Blog mentions, including Science Alert; Psych

News Alert; Science news, comment and analysis, theguardian.com

166 News mentions, including Neurology Advisor, Spectrum News, Muswellbrook Chronicle, Wellington Times

Simon Bury

"Supporting a neurodiverse workforce"

Opinion piece published in 58 regional paper and 10 print papers (e.g. The Canberra Times).

October

Jane Mantzalas (PhD candidate), Amanda Richdale, Cheryl Dissanayake

"What Is Autistic Burnout? A Thematic Analysis of Posts on Two Online Platforms"

Blog post, Mad In America; Spectrum News; Refinery29

Amanda Richdale

"Why some children with autism find it hard to sleep"

Feed, Play, Love

Podcast by Shevonne Hunt

November

Rachel Jellett, Lauren Lawson, Melanie Muniandy, Cheryl Dissanayake

"Autism-related dietary preferences mediate autism-gut microbiome associations"

Recommended by Faculty Opinions

Wikipedia mention - Régime alimentaire d'exclusion dans l'autisme

5 Blog mentions, including Science Alert, Microbiome Digest - Bik's Picks, Cell

253 News mentions, including Spectrum News, Manning River Times, Intellasia

December

Darren Hedley (quoted), Josephine Barbaro

"Website to help prevent suicide"

Mirage (online news); outinperth.com; heromag.net, mixspoint.in; 2SER.com

Darren Hedley

"La Trobe University researchers help prevent suicide in the autistic and LGBTIQ+ communities with website"

The Illawarra Mercury

By Alannah Sciberras

Darren Hedley

"New autism specific resource aims to reduce suicide rates"

Disability Support Guide

By Anna Christian

Darren Hedley (quoted)

"New Australian resource to help identify and respond to suicide risk"

ABC Newsradio

By Thomas Oriti

Darren Hedley, Kat Denney, Simon Bury, Ensu Sahin, Cheryl Dissanayake

"The Association Between COVID-19 and Suicide Risk Factors in Australian Autistic Adults"

Life in Mind.org.au

Darren Hedley, Josephine Barbaro

"Suicide prevention website a vital aid for autistic and LGBTIQ+ communities"

Bendigo Advertiser

Amanda Richdale

"Sleep and Autism"

A Different Brilliant Podcast by Aspect

Top 4 research outputs for 2021 by Altmetric* score



Altmetric

2410

Autism related dietary preferences mediate autism-gut microbiome associations

2035

Effect of Preemptive Intervention on Developmental Outcomes Among Infants Showing Early Signs of Autism

513

The Lancet Commission on the future of care and clinical research in autism

315

What Is Autistic Burnout? A Thematic Analysis of Posts on Two Online Platforms

*Altmetric is a system that tracks the attention that research outputs such as scholarly articles and data sets receive online, via social media and traditional media's online presence.

Cultural qualities

Care

Advocacy – Policy submissions

OTARC has taken advantage of multiple opportunities in 2021 to use the latest research from the Centre to inform Federal Government policy on how autistic Australians can thrive in all aspects of life.

NDIS proposed Early Childhood Early Intervention Reset

OTARC's embedded research program on early intervention and supports with the Margot Prior Autism Intervention Centre (MPAI) was highly relevant to this submission. Our team offered expert opinions on all terms of reference in the reset.

Comment on the Draft National Preventive Health Strategy 2021-2030

OTARC prepared a response to the Draft strategy regarding sleep not being regarded as a fundamental area of interest for a preventative health strategy. Utilizing OTARC's research, we pointed out that good sleep quality is scientifically linked to the draft focus areas of the strategy:

- Improving access to and the consumption of a healthy diet.
- Increasing physical activity.
- Reducing alcohol and other drug harm.
- Protecting mental health.

Feedback on the Productivity Commission Report on Mental Health

OTARC prepared a submission to the Committee after the release of the Final Report referencing:

1. Autism not being considered regarding its impact on the practical implementation of the recommendations, including prognosis, response to treatment, etc.
2. Identifying gaps in the training of
 - tertiary education providers in providing support to succeed in education spaces,
 - frontline workers in determining suicide risk for autistic people specifically, and
 - health workforce needing
 - a discrete unit on complex symptom presentations, including among individuals on the autism spectrum.

NDIS Consultation paper: Interventions for children on the autism spectrum

OTARC put forward 16 recommendations covering:

- Consultation - consulting with autistic people and their carers
- Promotion of best practice – evidence-based, participant-focused, accessibility of information for participants
- Reassessing how to determine what is “reasonable and necessary” and allocation of funding
- Supporting parents and carers to exercise choice and control
- Conflict of interest

Senate Select Committee on Mental Health and Suicide Prevention

OTARC prepared a submission to the Committee with community partners The Melbourne Clinic and Mindful and our students. We provided 20 evidence-based, community-driven recommendations that would benefit autistic Australians, including:

- Mandatory federal reporting of all self-harm and suicide events with a specific question regarding autism status.
- Autism as a group of interest in any policy or implementation of the Productivity Commission's Inquiry Report into Mental Health.
- Informed service provision for autistic people.
- Accommodations and adjustments to usual practice for autistic people.
- Specialist service availability, development, and expansion.

- Education and training of service providers.
- Research.

Outcomes

Professor Amanda Richdale, Dr Darren Hedley and AMAZE participated in a public hearing round table to discuss autism, mental health, and suicide prevention. The Final Report specifically references OTARC testimony (3.28, 3.29, 3.31). The result of our submission and testimony (as well as other stakeholders in the autism space) was the inclusion of an autism specific recommendation:

Recommendation 4 - The Committee recommends that the Australian Government ensure the principle of accessibility is at the forefront of all policy and funding programs for the mental health and suicide prevention sector, with a focus on increased funding for specialist services, such as forensic, perinatal and autism services, to innovate, expand and meet demand.

Senate Select Committee on Autism

Following a submission to the Committee in 2020, Professors Dissanayake, Lane and Richdale presented at a public hearing. The Chair and Co-Chair of the Committee (Senators Hollie Hughes and Carol Brown, pictured) visited OTARC to further discuss our submission and recommendations.



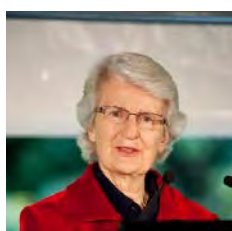
Cultural qualities

Accountable

As well as formal structures to ensure accountability, our researchers share their findings with the wider community via invited talks.

The OTARC advisory committee's role is to:

- facilitate industry, government and non-profit sector engagement and partnerships;
- facilitate the provision of independent input and guidance on the external environment; and
- endorse and regularly review progress in the implementation of OTARC's five year strategic plan.



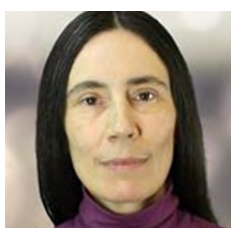
Dr Sylvia Walton (Chair)
AO, previous Chancellor of
La Trobe University



Professor Cheryl Dissanayake
Founder, Director and
Chair of OTARC



Professor Alison Lane
Deputy Director of OTARC



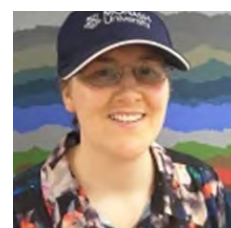
Professor Suzanne Fraser
Director, ARCSHS, La Trobe
University



Professor Andy Hill
Assoc Provost, Office of the
Pro Vice-Chancellor



Professor Stephen Kent
Dean & Head of School of
Psychology & Public Health



Ms Penny Robinson
Autism Advocate; Lecturer,
Monash University



Mr Stephen May
Director, Alumni and
Advancement



Mr Roger Foenander
Senior Finance Executive



Mr Jim Mullan
AMAZE CEO

Invited talks

Barbaro, J. Early identification of autism in infancy and toddlerhood using MoSAIC (Monitoring of Social Attention, Interaction and Communication). Australian Psychological Society, Webinar, March.

Barbaro, J. *Screening for Autism Spectrum Conditions in Infants and Toddlers*. Online, National Disability Insurance Agency (NDIA), August 4.

Barbaro, J. & Nair, R. *Monitoring of Social Attention, Interaction, and Communication*. Innovative Research Universities, Research Commercialisation Online Webinar, November 23.

Barbaro, J. *Autism and its presentation in very young children*. NextSense Online Seminar October 7.

Bury, S. M. *Supporting wellbeing*. Autism@Work Summit 2021, Virtual Summit, Australia, August 24.

Clark, M. End user Engagement in Autism Research. ASELCC Research Series, November.

Dissanayake, C. *Autism Research and Current Practice in Australia*. ABIA Annual General Meeting, Dec 1.

Lane, A. E. *Navigating practice decisions for children with sensory processing difficulties: An evidence-based approach*. OT Australia Paediatric Special Interest Group Seminar, October.

Sadka, N.R. *Psychologists, key contributors in the National Disability Insurance Scheme (NDIS)*. The Australian Psychological Society (APS) (Webinar), April 1.

Unwin, K. *Autism and sensory processing*. Centre for the Study of Autism and Christian Community, University of Aberdeen, May.

Professional training

Barbaro, J. *Monitoring of Social Attention, Interaction and Communication (MoSAIC) in Infants and Toddlers*. Online training, Friuli Venezia Giulia, August 9-10.

Barbaro, J. *Screening for Autism in Infants and Toddlers using Social Attention and Communication Surveillance (SACS)*. Maccabi Health Services Online Training, Israel, November 25.

Bury, S. Supporting a Neurodiverse Workforce – A mental health and well-being resource and training package. In person training for Untapped members. March 2-10.

Bury, S. Supporting a Neurodiverse Workforce – A mental health and well-being resource and training package: Train-the-trainer. Online training of Autism Spectrum Consultants (ASCs; Untapped). March 22-25.

Undergraduate Subject: Understanding and Support for Autism

This subject explores the cluster of conditions formerly identified under the umbrella term of Autism Spectrum Disorder (ASD), taking both a scientific/medical perspective and a neurodiversity/lived experience and applied perspective. It considers the presentation of autism and the lived experience and support needs of individuals and their families, right across the lifespan; from neonatal life and very early infancy, right through childhood and adolescence, into adulthood.

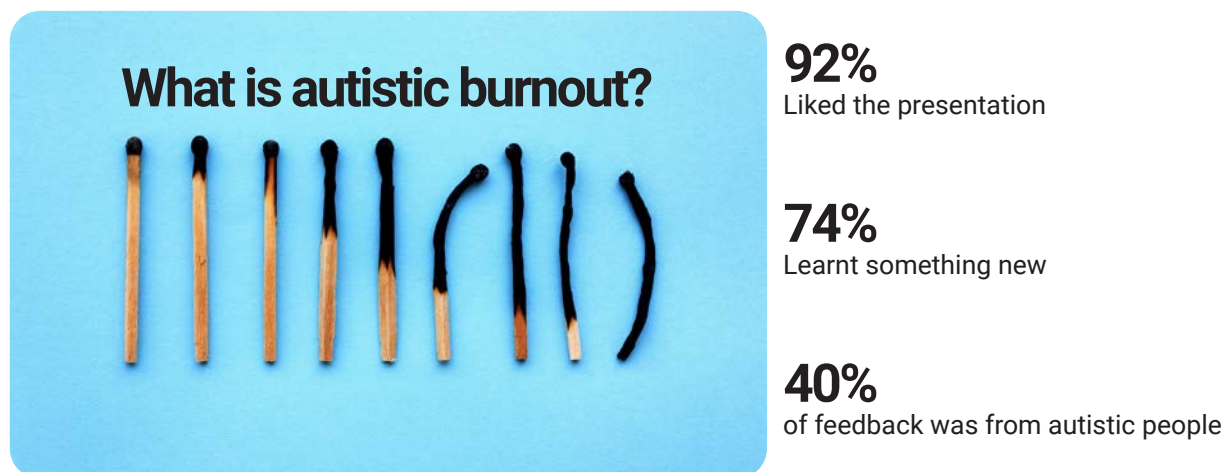
Presenter	Lecture topic
Josephine Barbaro	Early Autism Phenotype. Emerging signs of autism in infancy and toddlerhood.
Kristelle Hudry & Melissa Gilbert	Emerging Signs of Autism in Infancy and Toddlerhood
Nancy Sadka	Learning Needs of Children on the Spectrum
Amanda Richdale & Lauren Lawson	Support Needs for Mental Health and Co-Occurring Conditions
Lacey Chetcuti & Alison Lane	Unpacking Heterogeneity in Autism: The Spectrum and Subtypes
Rebecca Flower & Cheryl Dissanayake	Ethical Considerations and International Perspectives on Autism Research

Cultural qualities

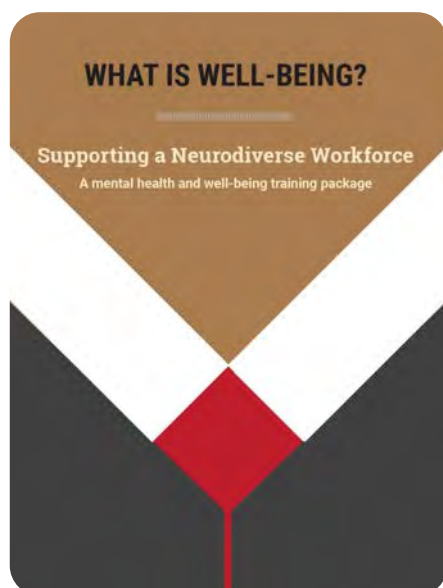
Innovative

Science communication

In 2021 we expanded our short, plain english interactive online summaries of OTARC's newest research findings based on stakeholder feedback. We produced 8 presentations, averaging a viewership of 522 per presentation. The presentation with the highest number of views was "What are the links between COVID-19, wellbeing, depression, and suicide risk factors in Australian autistic adults?" with 1082 views. We also started to collect more information from our viewers through a 2-minute online survey. We found that:



Supporting a neurodiverse workforce: A mental health and wellbeing online training course



Developed in partnership with Untapped (a company advocating for autism employment), this online training course is aimed at the colleagues and managers of autistic employees.

The training includes 11 evidence-based modules, with topics ranging from autism awareness and creating autism-friendly workplaces, to recognising signs of mental ill health.

It includes 2 modules specifically targeting the management of suicidal ideation and behaviour, and self-harming behaviour. It was launched in December 2021.

The Suicide Response Project



The SRP is an educational website that provides information for the public about how to detect and respond to suicide risk in others. This resource was co-designed with autistic and sex/gender diverse people with lived experience of suicide ideation and behaviour. It also included input from their families, as well as people with lived experience of being bereaved by suicide or having supported someone after a suicide attempt.

It consists of 12 modules, including animated videos to enhance accessibility. It includes resources for professionals and its use is being promoted by our research partners Aspect and Untapped. It was launched in December. <https://www.suicideresponseproject.com>

ASfAR 2021 State Conference: Mental Wellbeing and Suicide Prevention in Autism



OTARC hosted this conference which was presented in a fully immersive 3D virtual environment custom-designed by Collectivibe.com. The meeting featured Keynote Speakers, Panel Discussions, Virtual Networking and Sponsor Booths.

With a focus on enabling connection between the diverse groups involved in the mental wellbeing of autistic people, this event attracted autistic people, their carers and family members, allied health professionals, psychologists and clinicians, researchers and academics, students, and those with lived experience of suicide. Almost half of the 400 attendees had lived experience. The 'Lived Experience' discussion

panel foregrounded these voices, while the conference format allowed lively audience participation.

A focus on policy and service provision in the other discussion panel was carried over into the post-conference Roundtable, hosted the following day. This Roundtable distilled the conference outcomes and discussions into clear research and policy recommendations, suitable for inclusion in future policy briefs.

The post-conference feedback was overwhelmingly positive, with 91% of attendees reporting to be "very" or "somewhat satisfied".

Participants liked:



"lots of different perspectives!"

"Overall, a great variety of researchers, clinicians and people with lived experience. Good use of technology."

"The range of topics, the importance of co-design and shared voice - I will be focused so much more on that in my work. The range of speakers/their knowledge and ideas was incredible and very inspiring."

"The lovely way the online format was set up- very clear and neurodivergent friendly!"

"A really fantastic platform that was quite interactive and engaging! A great mix of lived experience, clinical, policy and research experience - a collective effort on advocating for change."

"The Lived Experience Panel was fantastic! Its great that researchers, clinicians and people with lived experience were brought together into one conference. The online platform had some great resources, thank you."

The Lancet Commission on the future of care and clinical research in autism 2019-2020

OTARC Director and Chair, Professor Cheryl Dissanayake, participated in this Commission comprising the world's leading autism researchers, clinicians and advocates. Their aim was to articulate what can be done within the next 5 years to address the needs of autistic individuals and their families worldwide.

"(The) Commission proposes a novel modified stepped care and personalised health model of intervention and assessment for individuals with autism and their families ... (where) ... support takes into account the preferences, needs, and costs (financial and otherwise) to individuals and families at each step"

The Commission was published online in December 2021 and received extensive media attention. The article was tweeted 577 times in December, by members of the public (79%), scientists (11%), practitioners (6%) and science communicators (3%) from around the world.



Group photo of the Lancet Commission on the future of care and clinical research in autism 2019-2020

Cultural qualities

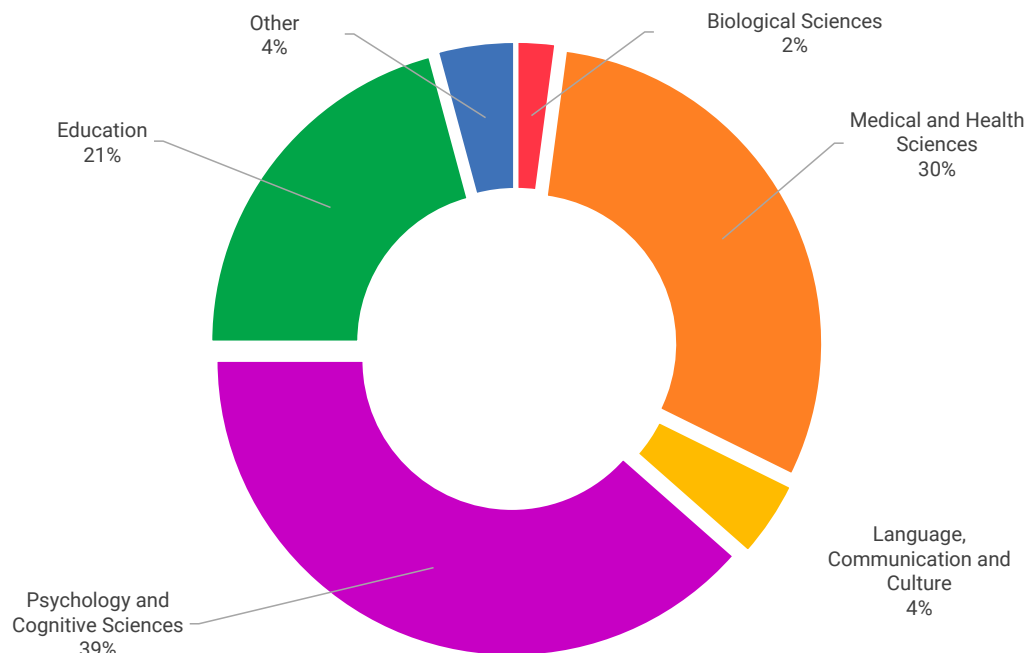
Connected

We connect locally, regionally and globally through our relationships with industry and community partners, our extensive network of research collaborations, our program of seminars and through the interdisciplinary nature of our research.

Building connections across disciplines

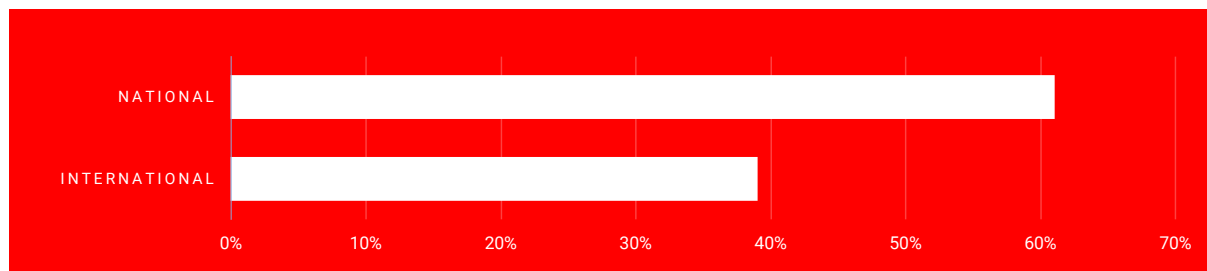
Discipline connections (SciVal 2018-2021)

Publications by OTARC Researchers cover a broad range of sub-disciplines, reflecting the complex nature of autism. The top subdisciplines under which OTARC publications have been classified in 2021 appear in the chart below.



Industry and Community partners

Collaborators - all co-authors on publications, conference presentations and grants and student co-supervision.



Australia

La Trobe University

Andrews, H.
Adikari, A.
Aulich, A.
Bent, C. A.
Bhopti, A.
Capes, K.
Chan, C.
Davy, G.
Dimov, S.
Flower, R.
Green, C. C.
Hill, K.
Hocking, D.
Hudry, K.
Iacono, T.
Jones, C.
Morris, E.
Nicholson, J.
Prendergast, L.
Pye, K.
Ridgway, L.
Roussis, S.
Rumbold, B.
Shiell, A.
Smith, J.
Southall, A.
Spoor, J. R.
Yaari, M.
Walkowiak, E.
Ward, L.
Wright, K.
Wickramasinghe, S.

ASPECT

Cai, R. Y.
Gallagher, E.

Australian National University

Batterham, P.

Autism Association of Western Australia Inc

Alach, T.
Cameron, K.
Mayber, M.

Autism Partnership Australia

Glenross, G.
McKinnon, K.

Charles Darwin University

Moss, S.

Child and Adolescent Health Service

Davidson, E.

Curtin University

Girdler, S.
Falkmer, T.

Daphne Street Autism Specific Early Learning and Care Centre

Frost, G.

Deakin University

Brown, C. M.
Siberras, E.
Stokes, M. A.

Department of Health Western Australia

Wray, J.

Dup15q Australia Ltd

Cahir, C.

Flinders University

Thomas, E. F.
Wenzel, M.
Woodyatt, L.
Young, R.

Foundation for Angelman Syndrome Therapeutics (FAST)

Cross, M.
Simons, C.

Government of Western Australia

Slee, J.

Griffith University

Sulek, R.
Trembath, D.
Tucker, M.
Varcin, K. J.

Hunter Genetics

Rogers, C.

Hunter New England Population Health

Leigh, L.
Oldmeadow, C.

Ingham Institute for Applied Medical Research

Descallar, J.
Eastwood, J.

North West Tasmania Autism Specific Early Learning and Care Centre

Fordyce, K.

The Melbourne Clinic

Fisher, C. A.

**The Sydney Children's Hospitals
Network Randwick and
Westmead**

Silove, N.

Macquarie University

Benders, T.
den Houting, J.

Microba Life Sciences

Car, L.
Tyson, G. W.
Wood, D. L. A.

Monash University

Williams, K.
Freeman, N. C.
Ure, A.

**Murdoch Children's Research
Institute**

Baker, E. K.
Godler, D. E.

**Orygen, The National Centre
of Excellence in Youth Mental
Health**

Cotton, S.
Robinson, J.

**Prader-Willi Syndrome
Australia Ltd**

O'Brien, J.

**Queensland University of
Technology**

de Zubicaray, G. I.
Laurens, K.
McMahon, K. L.
Williams, K.

RMIT University

Bartram, T.
Walter, R.

Southern Cross University

Donelly, M.
Mozolic-Staunton, B.
Yoxall, J.

Telethon Kids Institute

Alvares, G. A.
Billingham, W.
Boutrus, M.
Chee, A.
Clark, A.
Cleary, D.

Cooper, M. N.
Hafekost, C.
Harun, A.
Licari, M. K.
Leslie, J.
Pillar, S. V.
Stevenson, P. G.
Whitehouse, A. J. O.
Varcin, K.

University of Queensland

Berry, J.
Dawson, P. A.
Farrelly, A.
Gratten, J.
Lennox, N.
Harley, D.
Heussler, H. S.
Holdsworth, H.
Holtmann, G.
Hansell, N. K.
Henders, A. K.
Frenk, M. L.
Lin, T.
Louis, W. R.
McLaren, T.
McRae, A. F.
Miller, J. L.
Nunn, L.
Restuadi, R.
Strike, L. T.
Trzaskowski, M.
Vinkhuyzen, A. A. E.
Visscher, P. M.
Wallace, L.
Wray, N. R.
Wright, M. J.
Yang, Y.
Yap, C. X.
Zeng, J.

University of Melbourne

Amor, D. J.
Clapperton, A.
Hayward, S. M.
Prior, M. R.
Radovini, A.
Saunders, F.
Uljarević, M.

University of Newcastle

Armstrong, H.
Barker, D.
Brent, J.
Byrnes, E.
Campbell, L. E.
Collison, A.

Colyvas, K.
Dally, K.
Gibson, P. G.
Karayanidis, F.
Mallise, C. A.
Mattes, J.
Milton, G.
Mitchell, A.
Murphy, V. E.
Ray, K.
Rowlandson, L.
Sheedy, A. J.
Swaab, L.
Tam, K. I.
Tzelepis, F.
Whalen, O. M.
Wilson, L.
Woolard, A. J.

University of NSW

Arnold S.R.C.
Dawson, P. A.
Eapen, V.
Foley K.-R.
Gratten, J.
Grove, R.
Hasan, I.
Higgins, J.
Huang, Y.
Hwang, J.
Jalaludin, B.
Karlov, L.
Khan, F.
Kohlhoff, J.
Liaw, S. T.
Lingam, R.
Masi, A.
Mathew, N. E.
Mendoza Diaz, A.
Nothard, M.
Smith, A.
Song, Y. J.
Tam, C. W. M.
Trollor J. N.
Visscher, P. M.
Woolfenden, S.

University of South Australia

Segal, L.

University of Sydney

Guastella, A.
Ong, N.
Silove, N.

University of Tasmania

Barnett, T.
Quarmby, L.

**University of Technology
Sydney**

Arora, S.
Goodall, S.
Grove, R.

University of Western Australia

Maybery, M. T.

Western Sydney University

McGarty, C.

Other

Murphy, D.
Coutts, N.

International

Argentina**Fundación Brincar por un
Autismo Feliz (Argentina)**

Gotelli, M. M.
Ysrraelit, M. C.

Canada**University of Toronto (Canada)**

Anagnostou, E.
Szatmari, P.

University of Calgary

Nicholas, D.

Germany**University Hospital Frankfurt**

Freitag, C. M.

India**Sangath**

Divan, G.

Israel**Bar-Ilan University**

Bonneh, Y. S.
Linkovski, O.

Shamir Medical Center

Stolar, O.

Tel Aviv University

Gabis, L. V.
Gross, R.

University of Haifa

Gal, E.
Gal-Mishael, R.
Goldfarb, Y.
Kimchi, R.
Marciano, H.
Vissoker, R.E.
Zafrani, O.

Japan**Gunma Prefectural Women's
University**

Kezuka, E

**Gunma University of
Health and Welfare**

Okuno, O.

Malaysia**Autism Initiatives Malaysia**

Leong, D.

New Zealand**Auckland University of
Technology**

Shepherd, D.

**Victoria University of
Wellington**

Powell-Hector, N.
Waddington, H.
Wilson, E.
van der Meer, L.

Norway**Nic Waals Institute**

Havdahl, A.

Singapore**Singapore National University**

Nah, F.

South Africa**University of Cape Town**

de Vries, P.

Spain**Alicante Institute for Health and
Biomedical Research (ISABIAL-
FISABIO Foundation)**

Ballester-Navarro, P.
Inda, M. -D. -M.
Muriel, J.
Peiró, A. M.

EDUCATEA

Javaloyes-Sanchís, A.
Infanta Leonor Autism Center
Belda-Cantó, C.

**Miguel Hernández University
(Spain)**

Morales, D.

**San Rafael Autism Center
(Spain)**

Aguilar, V.

University of Murcia (Spain)

Martínez-Madrid, M. J.

Switzerland**World Health Organization**

Servili, C.

United Kingdom**Autistica**

Cusack, J.

Cardiff University

Hall, J.
Leekam, S. R.
Powell, G.
Jones, C. R. G.
Underwood, J.

Guys' and St Thomas Hospital

Slonims, V.

King's College London

Charman, T.
Howlin, P.
Pickles, A.
Simonoff, E.

London School of Economics

Knapp, M.

Swansea University

Ellis-Davies, K.

The University of Surrey

Leonard, H. C.

University of Manchester

Blenkley, D.
Green, J.
Taylor, C.
Wan, M. W.

United States of America
Autism Science Foundation
Tepper Singer, A.

Bowdoin College
Putnam, S.

Brigham Young University
Kay, D.
Mikle, S.

Bucknell University
Evans, D. W.

Cleveland State University
DeBoth, K. K.

Colorado State University
Lane, S. J.

Drexel University
Vivanti, G.

Duke University
Dawson, G.

**Emory University School of
Medicine**
Scahill, L.

Florida State University
Carretta, H.
Princeton
Shattuck, P.

**Rady Children's Hospital San
Diego**
Carr, T.

**Saint Mary's College of
California (USA)**
McCauley, J. B.

Stanford University
Hardan, A. Y.

**Simons Foundation Autism
Research Initiative**
Wang, P. P.

Thomas Jefferson University
Schaaf, R. C.

University of California
Kasari, C.
Lord, C.
Holbrook, A.
Mundy, P. (Davis)
Toolan, C.

**University of California San
Francisco**
Shui, A. M.

University of Colorado
Katz, T.

University of Kansas
Boyd, B.

**University of Southern
California**
Thompson, P. M.

University of Utah
Carbone, P.

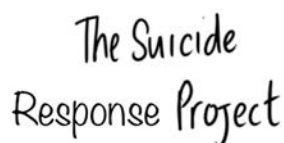
University of Virginia
Mazurek, M.
Nevill, R.

Vanderbilt University
Malow, B. A.

**Virginia Commonwealth
University**
Reynolds, S.

Other
Plank, A.

Industry and Community Partners



Research Seminars

FEBRUARY	Associate Professor Angelika Anderson	Teaching creativity: Can lag schedules of reinforcement teach novel and varied responding in children with ASD?	Prof Anderson is an expert in Child Behaviour; Disabilities; Inclusive Education; Teaching and Learning; and Applied Behaviour Analysis.
MARCH	Dr Rebecca Sutherland	ASD assessments and telehealth	Dr Sutherland is a speech pathologist who works at the Child Development Unit, Children's Hospital at Westmead, and as an assistant professor in Speech Pathology for the University of Canberra.
APRIL	<p>Honours Student Seminar: Rebekah Benn - How Can Psychologists Better Work With Autistic Adults?; Mikaela Finn - Experiences of Autistic People in Job Interviews; Ellen Richardson - Perceptions of Disability Workplace Accommodations; Azul Hussain - Scale Development and Psychometric Evaluation of the Sensory Observation Autism Rating Scale (SOAR); Madison Chetcuti - Sensory Behaviours in 11-36-month-old Autistic Children: Investigating Associations with Diagnosis, Age and Gender; Elisa Pica - Understanding Psychological Inflexibility and Quality of Life; Matthew Strebinos - Psychological Determinant of Emotion Dysregulation.</p>		
MAY	Professor Sonya Girdler	Autistic adults and community integration	Prof Girdler is affiliated with the School of Allied Health at Curtin University and is Director of the Curtin Autism Research Group (CARG) and Director of Program 3 (adulthood) of the 'Living with Autism' Cooperative Research Centre.
JULY	Assistant Professor Rachel Aiello	The ASD and ADHD Connection: What the Latest Research Tells Us & How This Can Help Inform Clinical Care No	Dr Aiello is an Assistant Professor of Psychiatry & Behavioral Sciences at the Duke Center for Autism and Brain Development. Dr Aiello is an investigator involved in the Duke NIH Autism Center of Excellence research program focused on early detection and treatment of children with ASD and ADHD.
AUGUST	Assistant Professor Patrick Jachyra, PhD	Suicidal thoughts and behaviours among autistic youth and young adults	Dr Jachyra is an Assistant Professor at Durham University, in the United Kingdom. Dr Jachyra completed post-doctoral training at the Centre for Addiction and Mental Health which is Canada's preeminent mental health hospital.
OCTOBER	Professor Amanda Richdale	Autism: Moving into Adulthood and Beyond	Prof Richdale is a founding staff member at OTARC, is a member of the ASA Sleep Health Council committee and is a registered psychologist (Educational & Developmental) and Fellow of the APS College of Educational and Developmental Psychologists.
NOVEMBER	<p>Honours Student Completion Seminar: Rebekah Benn - "I Found at Times I Wasn't Being Heard": The Experiences of Autistic Adults in Working With Psychologists in Australia; Sarah Murphy - Women seeking an autism diagnosis in Australia: What helps and what hinders; Azul Hussain - Scale Development and Psychometric Evaluation of the Sensory Observation Autism Rating Scale (SOAR); Mikaela Finn - Experiences of Autistic People in Job Interviews; Ellen Richardson - Peer Perceptions of Workplace Accommodations for Autistic Employees; Madison Chetcuti - Sensory Behaviours in Young Children: Differentiating Autism and Language/Developmental Delay.</p>		

New patron appointed

Professor Richard Graeme Larkins AO

Professor Richard Larkins AO was appointed OTARC's new Patron at the 2021 AGM. Prof Larkins is a former Chancellor of La Trobe University. Prior to this he was Vice-Chancellor and President of Monash University (2003-2009) and has had a distinguished career in medicine, scientific research and academic management. He also serves on the board of the Ian Potter Foundation.



Research programs

Early identification and diagnosis of autism

Research program leader: Dr Josephine Barbaro

Studies under this theme aim to:

1. develop evidence-based strategies and tools to identify autism in children under 3 years,
2. inform government policy on early childhood development,
3. educate health professionals and parents/carers in how to recognise the signs of autism as early as possible, and
4. improve the outcomes of autistic children.

Highlights:

- Release of Mandarin and Spanish versions of ASDetect
- Online resource development
 - How can we diagnose autistic girls earlier? (455 views)
 - Knowledge and diagnosis of autism in Nepal (302 views)
- Delivery of the Developmental Surveillance for Autism: Final Report to the Autism CRC.

Current studies

<p>Developmental Surveillance for Autism - Social Attention and Communication Study-Revised (SACS-R)</p> <p>Funding: Menzies Foundation; Autism CRC</p>	<p>Josephine Barbaro Lael Ridgway Cheryl Dissanayake Nancy Sadka Melissa Gilbert Erin Beattie Lyndsay Quarmby (University of Tasmania) Tony Barnett (University of Tasmania)</p>	
<p>Evaluation of ASDetect, a mobile application for autism</p> <p>Funding: La Trobe University, School of Psychology and Public Health</p>	<p>Josephine Barbaro Cheryl Dissanayake Nancy Sadka Lael Ridgway Melissa Gilbert Erin Beattie</p>	
<p>ASDetectPRO training needs analysis</p> <p>Funding: La Trobe University</p>	<p>Melissa Gilbert Josephine Barbaro Radhika Nair Shannon Elgar (Honours candidate)</p>	
<p>Maternal and Child Health nurse training for the early identification of autism</p> <p>Funding: Victorian Government</p>	<p>Katherine (Kate) Gore (Masters candidate) Melissa Gilbert Josephine Barbaro</p>	
<p>Early identification of ASD in Japan: Statutory infant health check-ups and early screening tools</p> <p>Funding: School of Psychology and Public Health, La Trobe University</p>	<p>Hiroko Kawashima (PhD candidate) Cheryl Dissanayake Darren Hedley Emiko Kezuka</p>	
<p>Brief Autism Detection in Early Childhood (BADEC)</p>	<p>Darren Hedley Rose Nevill (University of Virginia) Robyn Young (Flinders University) Micah Mazurek (University of Virginia) Fei Nah (Singapore National University)</p>	
<p>The production and validation of a Sensory Observation Autism Rating scale (SOAR) to map autism-specific sensory behaviours and improve early diagnosis</p>	<p>Katy Unwin Josephine Barbaro Alison Lane</p>	
<p>Developmental surveillance for Autism Spectrum Disorder (ASD) in early childhood education settings</p>	<p>Beth Mozolic-Staunton Michelle Donelly Jacqui Yoxall (Southern Cross University) Josephine Barbaro</p>	
<p>Examining the association between parental cultural and ethnic background and the diagnosis of autism in 12–42-month-old children</p> <p>Funding: La Trobe University</p>	<p>Josephine Barbaro Nancy Sadka Ifrah Abdullahi Jess Scaletti (Honours Candidate)</p>	
<p>A multistate trial of an early surveillance program for autism within general practices in Australia</p> <p>Funding: Autism CRC</p>	<p>Josephine Barbaro Cheryl Dissanayake Melissa Gilbert Ifrah Abdullahi Radhika Nair Katy Unwin & the UNSW team</p>	<p>Valsamma Eapen Anne Masi Antonio Mendoza Diaz Aline Smith Iqbal Hasan</p>

Research programs

Interventions and supports for children on the autism spectrum and their families

Research program leader: Professor Alison Lane

Many of the studies profiled below focus on Early Intervention (EI) for pre-school children with autism and building supports for their families. We have also begun to expand our research into supports for school-age and adult groups. OTARC is currently studying:

1. the long-term outcomes of autistic children diagnosed early who accesses early intervention,
2. the effect of different learning environments on intervention outcomes,
3. predictors of developmental outcomes to different types of intervention,
4. best methods to support sensory processing challenges in the classroom and in other community places,
5. the effect of compression garments on self-regulation concerns,
6. the support their families provide and need, and
7. the family outcomes of autistic children accessing early intervention.

Highlights:

- Welcoming a new research leader, Professor Alison Lane, to the team.
- Two submissions to the NDIA
 - Feedback on Consultation paper: Interventions for children on the autism spectrum
 - Response to the NDIA's proposed Early Childhood Early Intervention Reset
- Focussed discussion around engagement of stakeholders in intervention research
- Focussed discussion about ensuring findings of intervention research are utilised in practice



Current studies

<p>Child and Family Outcomes of children receiving the Group - Early Start Denver Model (G-ESDM)</p> <p>Funding: Department of Social Services</p>	<p>Cheryl Dissanayake Megan Clark Victorian ASELCC Team</p>	
<p>Parental resolution to their child's autism diagnosis and fidelity of parent delivered intervention and intervention outcomes for pre-school children</p> <p>Funding: La Trobe University, School of Psychology and Public Health</p>	<p>Paula Grogan (Masters candidate, Clinical Psyc) Cheryl Dissanayake Rachel Jellett Katy Unwin Maya Yaari</p>	
<p>Intranasal Oxytocin in Preschoolers with Autism receiving Social Learning Therapy: A Randomised, Double-blind, Repeated Dose Study</p> <p>Funding: NH&MRC</p> <p>On hold due to Covid-19</p>	<p>Adam Guastella Geraldine Dawson Cheryl Dissanayake Valsamma Eapen Yun Ju (Christine) Song</p>	<p>Ruth Feldman Natalie Silove Rachel Jellett Katy Unwin Sally Rogers</p>
<p>Early Intensive Behavioural Intervention for Autism: Understanding 'What Works for Whom?'</p> <p>Funding: Department of Social Services</p>	<p>Cathy Bent Cheryl Dissanayake Kristelle Hudry Katherine Pye Victorian ASELCC Team Giacomo Vivanti (Drexel University) Karen McKinnon Susan Glenross (Autism Partnership Australia)</p>	
<p>Supporting Best Practice in the Assessment and Treatment of Minimally Verbal Children with Autism</p> <p>Funding: Department of Social Services</p>	<p>David Trembath M. Tucker Kristelle Hudry Katherine Pye C. Muckett K. Fordyce G. Hoppenbrouwers A. DeBlasio S. Webb A. Joosten</p>	<p>R. Grove J. Paynter M. Westerveld N. Maher V. Rose D. Keen Valsamma Eapen S. Riley Teresa Iacono Cheryl Dissanayake</p>
<p>Australian Infant Communication and Engagement Study (AICES)</p>	<p>From Telethon Kids institute: Andrew Whitehouse Kandice Varcin Maryam Boutrus Matthew Cooper From La Trobe University: Kristelle Hudry Cheryl Dissanayake Josephine Barbaro Teresa Iacono Nancy Sadka</p>	<p>Other: John Wray (Department of Health WA) Jonathan Green (University of Manchester) Carol Taylor (University of Manchester) Ming Wai Wan (University of Manchester) Vicky Slonims (Guys' and St Thomas Hospital, London) Murray Maybery (University of Western Australia) Emma Davidson (Child and Adolescent Health Service)</p>
<p>Best Practice Guidelines for Working with Sensory Processing Challenges in Schools</p> <p>Funding: Queensland Department of Education</p>	<p>Alison Lane Katy Unwin Carl Leonard (University of Newcastle) Kylie Wales (University of Newcastle) Tennille Johnson (University of Newcastle)</p>	
<p>Effectiveness of a compression singlet on self-regulation in autistic children: A single case series</p> <p>Funding: AusIndustry Innovation Connections, Commonwealth Government; Indasun Pty Ltd.</p>	<p>Alison Lane Lacey Chetcuti</p>	
<p>Investigating the perspectives of school staff and pupils on flexible seating in a London mainstream primary school</p> <p>Funding: The Churchill Fellowship</p>	<p>Laura Crane (University College London) Katy Unwin Heba Al-Jayoosi (University College London) Sarah O'Brien (Autistica) Spencer Hayes (University College London) Aaron Giuliano (University College London)</p>	
<p>Sense-scaping the Liturgy: The Impact of Sensory Difference in Autism on Worship</p> <p>Funding: The John Templeton Foundation</p>	<p>Katy Unwin Léon van Ommen (University of Aberdeen)</p>	
<p>The impact of multi-sensory environment use on children with a range of conditions</p>	<p>Catherine Jones (Cardiff University) Katy Unwin Georgie Powell (Cardiff University)</p>	
<p>Self-reported experiences of itch in autistic adults</p>	<p>George Tackley (Cardiff University) Katy Unwin Catherine Jones (Cardiff University) Jack Underwood (Cardiff University)</p>	

Research programs

Vocational pathways

Research program leader: Professor Cheryl Dissanayake

Vocation (e.g., employment, study) empowers people to become more engaged, active and independent within their communities. These opportunities can be limited for autistic people.

Highlights:

- Delivery of Supporting a neurodiverse workforce: A mental health and well-being online training course. Now available online <https://www.neurodiversityhub.org/mentalhealth>
- Online presentation
 - Workplace Social Challenges Experienced by Employees on the Autism Spectrum (588 views)

Current studies

Understanding the Experience of Autistic Working Mothers in Australia: An Exploratory Study Funding: La Trobe University	Katherine (Kate) Gore (PhD candidate) Josephine Barbaro Melissa Gilbert Rebecca Flower Susan Hayward
Success in Higher Education for Neurodivergent Students Funding: La Trobe University	Lyndel Kennedy (PhD candidate) Amanda Richdale Lauren Lawson
Exploring the facilitators and barriers to successful transition to university for students on the autism spectrum. Funding: Flinders University	Alison Nuske (external PhD candidate) Fiona Rillotta Michelle Bellon Amanda Richdale
Enhancing wellbeing and social inclusion of marginalised populations: A two country multi component project. - Overcoming the social barriers to sustainable autism employment Funding: Victorian Endowment for Science, Knowledge and Innovation (VESKI)	Simon Bury Darren Hedley Jennifer Spoor Emmanuelle Walkowiak Alison Lane Naomi Schreuer Cheryl Dissanayake Eynat Gal

Research programs

Co-occurring conditions

Research program leader: Professor Amanda Richdale

Studies under this program of research seek to understand the conditions that frequently accompany autism and support the needs of autistic individuals who are affected by them. In adults these conditions impact everyday functioning in the community and workplace. We aim to:

1. develop a better understanding of how these conditions affect the day to day lives of autistic people,
2. better understand factors that may cause high rates of co-occurring conditions,
3. ensure that the tools we use to measure mental health are appropriate for autistic people (see work on the HADS and PHQ-9 scales which measure anxiety and depression),
4. develop supports that match the specific needs of the autistic community, and
5. educate government, frontline service providers and the general population about these co-occurring conditions and their impact on the lives of autistic people.

Highlights:

- The release of The Suicide Response Project - www.suicideresponseproject.com
- Successful ASfAR Health, Wellbeing and Suicide Prevention in Autism Conference and International Roundtable.
- Online resources
 - Supporting mental health: What young Australian autistic adults tell us (1206 views)
 - Anxiety, depression and autistic adults (1109 views)
 - What are the links between COVID-19, wellbeing, depression, and suicide risk factors in Australian autistic adults? (1131 views)
 - What Is Autistic Burnout? (982 views)
 - All Things Sleep. Life on the Spectrum Podcasts
 - Research in Autism Spectrum Disorders Special Issue on Sleep (Guest Editors: A. Richdale & M. Mazurek).

Research programs

Co-occurring conditions

Current studies

<p>Suicide prevention, mental health & well-being in autistic adults</p> <p>Funding: Suicide Prevention Australia, Untapped, La Trobe University</p>	<p>Darren Hedley Kat Denney Ensu Sahin Alex Haschek Simon Bury Angela Clapperton (University of Melbourne) Mirko Uljarević (University of Melbourne) Jo Robinson (University of Melbourne) Cheryl Dissanayake Julian Trollor (UNSW) Mark Stokes (Deakin University)</p>
<p>Intervention for insomnia in autistic adults (SLEAPI)</p> <p>Funding: La Trobe University</p>	<p>Amanda Richdale Eric Morris Lauren Lawson</p>
<p>Improving the competence of mental health practitioners in providing care to their autistic clients</p> <p>Funding: School of Psychology and Public Health La Trobe University</p>	<p>Robyn Ball (PhD candidate) Amanda Richdale Eric Morris Lauren Lawson</p>
<p>Inter-Relationships Between Autistic traits and Elements of Depression, Sleep Quality, and Fatigue in Autistic Adolescents and Adults: A Network Analysis</p> <p>Funding: Autism CRC and School of Psychology and Public Health La Trobe University</p>	<p>Louise Dickens (Masters candidate – Clinical Psychology) Eric Morris Amanda Richdale</p>
<p>The Role of Inflexible Behaviour and Thought Patterns in Emotion Dysregulation: The Mediating Role of Sleep</p> <p>Funding: School of Psychology and Public Health La Trobe University</p>	<p>Matthew Strebinos (2021 Honours candidate) Eric Morris Amanda Richdale</p>
<p>Exploring Factors that Mediate the Relationship Between Psychological Inflexibility and Psychological Quality of Life: A Cross-Sectional Study</p> <p>Funding: Autism CRC and School of Psychology and Public Health La Trobe University</p>	<p>Elisa Pica (2021 Honours candidate) Eric Morris Amanda Richdale</p>
<p>Characterising autistic burnout and its underlying mechanisms: An exploratory investigation</p> <p>Funding: School of Psychology and Public Health, La Trobe University</p>	<p>Jane Mantzalas (PhD candidate) Amanda Richdale Cheryl Dissanayake</p>
<p>Coping and resilience in autistic adults</p> <p>Funding: Autism CRC</p>	<p>Melanie Muniandy (PhD candidate) Amanda Richdale Lauren Lawson</p>
<p>Cross-sectional and longitudinal predictors of sleep problems in young autistic children from the ASDetect Cohort.</p> <p>Funding: La Trobe University Social Research Platform</p>	<p>Amanda Richdale Josephine Barbaro Nancy Sadka</p>

The Margot Prior Autism Intervention Centre



The Margot Prior Autism Intervention Centre continued to provide intensive early intervention and early education and care to children and families throughout the past 12 months, amid disruptions caused by the COVID 19 pandemic. We also maintained and strengthened our focus on wellbeing for our staff, children, and families across this year, including through ongoing yoga sessions for staff and children, traffic school days, a 'festival of fun' celebration and a children's art show throughout the entire Centre.

We continued our project with Department of Social Services, developing resources that capacity build families and the early education sector. We redeveloped existing training programs, that relied on face-to-face delivery, to online platforms. This

has included creating short video presentations on topics frequently requested by families, for example, communication, play and supporting behaviours of concern.



Research programs

Cross-program research

While most OTARC research can be categorised under four programs, we are also committed to broadening the scope of our research by encouraging interdisciplinary and collaborative approaches.

Studies in this section fit under more than one of the four main programs or fall outside the programs altogether.

Highlights:

- Delivery of the Longitudinal Study of Australian School Leavers with Autism (SASLA): Final Report to the Autism CRC.

Current studies

<p>Longitudinal Study of Australian School Leavers with Autism (SASLA)</p> <p>Funding: Autism CRC</p>	<p>Amanda Richdale Ru Ying Cai Mirko Uljarević Lauren Lawson Rebecca Flower Susan M Hayward Ifrah Abdullahi Lacey Chetcuti Alex Haschek</p>	<p>Melanie Muniandy (PhD candidate) Torbjorn Falkmer (Curtin University) Nick Lennox (The University of Queensland) Julian Trollor (University of New South Wales) David Harley (University of Queensland) Samuel Arnold (UNSW) Kitty-Rose Foley</p>
<p>Australian Longitudinal Study of Adults with Autism (ALSAA)</p> <p>Funding: Autism CRC</p>	<p>Julian Trollor (UNSW) Nick Lennox (UQ) Torbjorn Falkmer (Curtin University) Amanda Richdale Mirko Uljarevic</p>	<p>Lauren Lawson Lacey Chetcuti Rebecca Flower Susan M Hayward Samuel Arnold Kitty-Rose Foley</p>
<p>#TakeTheMaskOff: Autistic performativity and the neurodiversity movement</p> <p>Funding: La Trobe University (Department of Social Inquiry and OTARC)</p>	<p>Elisabeth Radulski (PhD candidate) Katie Wright Anthony Moran Cheryl Dissanayake</p>	
<p>Emotional awareness in young autistic adults (SASLA)</p> <p>Funding: Autism CRC</p>	<p>Alex Haschek Rebecca Flower Amanda Richdale Mirko Uljarević Ru Ying Cai Lauren Lawson</p>	

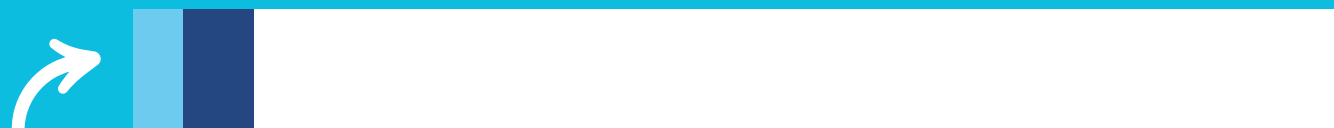
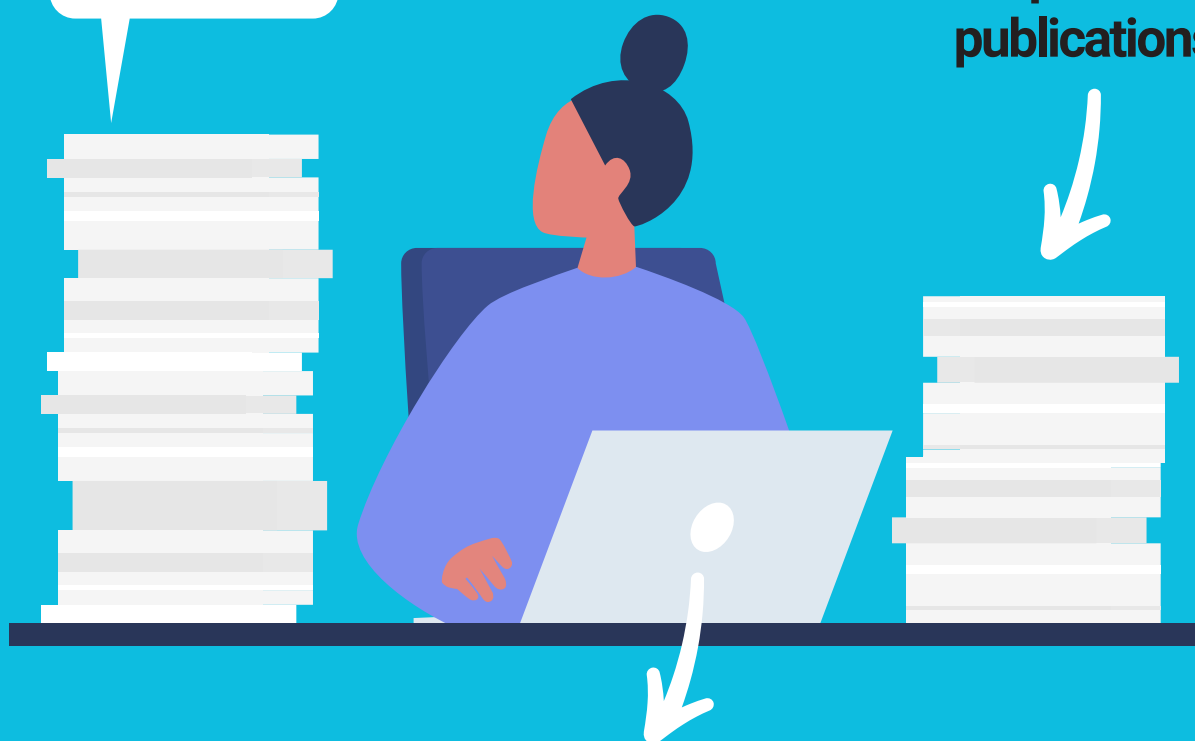
School-age outcomes of children who recieved G-ESDM	Megan Clark Cheryl Dissanayake
School-age outcomes of children with autism and parental wellbeing: investigations on the contribution of method-of-referral and age-of-diagnosis Funding: NHMRC	Cheryl Dissanayake Josephine Barbaro Alan Shiell Katrina Williams Alex Ure Katy Unwin Rachel Jellett
Autistic adults' experiences with end-of-life services, grief and bereavement Funding: La Trobe University	Jennifer Lowe (PhD candidate) Bruce Rumbold Cheryl Dissanayake
Participation, quality of life and parental outcomes in caregivers of school aged children with autism Funding: La Trobe University and NHMRC	Gemma Davy (PhD candidate) Cheryl Dissanayake Josephine Barbaro Katy Unwin
Associations and predictors of early sensory profile differences using an existing large dataset Funding: La Trobe University and University of Melbourne	Katy Unwin Mirko Uljarević (University of Melbourne)
Self-determination in Adulthood	Helen Andrews (PhD Candidate) Darren Hedley Simon Bury Cheryl Dissanayake

Staff

Academic impact summary

2021
51 papers

30% open access publications



47.7% of peer reviewed papers in the top 10% of Journals (CiteScore)



Total 676 views

FWCI of 1.65 (where 1 is average)

The field-weighted citation impact (FWCI) is an author metric which compares the total citations actually received by a researcher's publications to the average number of citations received by all other similar publications from the same research field.

5,432 direct media mentions of peer-reviewed papers

Staff

Academic staff



Professor Cheryl Dissanayake

Director and Chair

- Fellow, and Vice-President - International Society of Autism Research (INSAR)
- Vice-President and lifetime member, Australian Society of Autism Research (ASfAR)
- Commissioner of the Lancet Commission on Autism
- Recognised as Field Leader in Australia for the fourth year in a row in The Australian Research Supplement
- Leader of the Vocational Pathways Research Program



Professor Alison Lane

Deputy Director and Chair

- Registered Occupational Therapist
- Graduate Research Coordinator, Olga Tennison Autism Research Centre
- Leader of the Intervention and Supports Research Program



Professor Amanada Richdale

- Leader of the Co-occurring Conditions Research Program
- Project Leader of the Autism CRC Study of Australian School Leavers with Autism (SASLA)
- Registered Psychologist and Fellow - Educational and Developmental Psychologists APS College
- Member of the Editorial Board for Research in Autism Spectrum Disorders.
- Autism Editor for Current Developmental Disorder Reports.
- Editor for the Special Issue on Sleep in Autism for Research in Autism Spectrum Disorders

Staff

Academic staff



Associate Professor Josephine Barabaro

Principal Research Fellow

- Leader of the Early Identification and Diagnosis Research Program
- Project Leader with the Autism CRC
- Registered Psychologist
- Guest Editor Frontiers in Neurology, Pediatrics
- Treasurer of the Australian Society for Autism Research



Research Award Nomination. Aspect Australia, NSW.

Dr Darren Hedley

Senior Research Fellow

Convenor - 2021 Australasian Society for Autism Research (ASfAR2021) Conference on Health, Wellbeing & Suicide Prevention in Autism and Roundtable Suicide Prevention Australia Fellow
Editorial Board Member for Autism: International Journal of Research and Practice

Dr Lauren Lawson

Research Fellow (Parental Leave Jan-Oct)

Registered Clinical Psychologist & Board Certified Supervisor
Autism Co-editor for Current Developmental Disorder Reports

Dr Nancy Sadka

Research Fellow

Invited member of the Autism CRC Guideline Development Group – a new practice guideline for supporting the development and participation of children on the autism spectrum and their families.

Dr Simon Bury

Research Fellow

ECR Coordinator, Olga Tennison Autism Research Centre
Deputy-Chair, Vocational Pathways Research Program
Clinical Psychology Registrar

Dr Ifrah Abdullahi

Postdoctoral Research Fellow

Co-founder of Muslim Ability WA
Founder of the Young Somali Women's Society
Co-Founder & Liaison Officer Hope for the Horn Collective

Dr Katy Unwin

Postdoctoral Research Fellow

Member of ECR committee, La Trobe University
Co-chair of Early Identification and Diagnosis Research Program



NViTA Science-Engaged Theology fellowship award.
University of St Andrews and the John Templeton Foundation (\$7000).

Dr Melissa Gilbert

Postdoctoral Research Fellow

Reviewed for Frontiers in Pediatrics, section Child and Adolescent Psychiatry; Journal of Developmental and Physical Disabilities; International Journal of Developmental Disabilities

Dr Megan Clark

Research Fellow

Co-chair of Early Intervention Research Program
Provisional Psychologist



Best oral presentation - Autism Futures Conference (August)

Dr Rachel Jellett

Postdoctoral Research Fellow

Clinical Psychologist and board approved supervisor

Dr Lacey Chetcuti

Postdoctoral Research Fellow



Outstanding thesis – Nancy Millis Medal

Alex Haschek

Research Officer

Member of the La Trobe University School of Psychology and Public Health Diversity and Inclusion Committee

Professional staff

Doug Scobie	Centre Manager
Perrin Date	Research Operations Coordinator
Mick Leahy	Mobile App Marketing Officer
Melinda Denham	Communications Coordinator
Mithun Roy	CRM Officer
Radhika Nair	Project Manager
Margaret Laughton	Administration Officer
Erin Beattie	Project Officer
Kat Denney	Research Assistant
Jenny Luu	Research Assistant
Ensu Sahin	Research Assistant

Affiliate members

Dr Rebecca Flower	Lecturer, Psychology and Counselling
Dr Kristelle Hudry	Associate Professor, Psychology and Counselling
Dr Jennifer Spoor	Associate Professor, Department of Management, Sport and Tourism
Dr Eric Morris	Senior Lecturer, Psychology and Counselling
Dr Teresa Iacono	Professor, Rural and Regional Allied Health School
Dr Emmanuelle Walkowiak	Senior Lecturer, Economics, Finance and Marketing, Lecturer
Dr Anoo Bhohti	Lecturer, Occupational Therapy Alfred, Social Work & Occupational Therapy

Honorary Members

Dr David Trembath	Associate Professor, School of Allied Health, Griffith University
Dr Giacomo Vivanti	Associate Professor, Early Detection & Intervention Program, Drexel University, USA
Dr Cynthia Zierhut	Early Days Autism Centre, USA
Dr. Mirko Uljarevic	ARC Senior Research Fellow, Psychology, University of Melbourne
Dr Elfriede Ihsen	Retired
Dr Han Ming (Daniel) Leong	Co-chair, Autism Initiatives Malaysia

Adjunct Members

Dr Nusrat Ahmed	Hope Autism Centre, Bangladesh
Dr Yuan Gao	Independent Consultant, China
Amanda Golding	Autism Family Support Association
Dr Lesley Stirling	Professor, School of Languages and Linguistics, University of Melbourne
Michael Fieldhouse	Director, Emerging Businesses & Cyber Security; Dandelion Program Executive, DXC Technology

Publications

Peer reviewed articles

All metrics from 1st February 2022

Advances in Autism

Hedley, D., Spoor, J. R., Cai, R. Y., Uljarević, M., **Bury, S.**, Gal, E., Moss, S., **Richdale, A.**, Bartram, T., & **Dissanayake, C.** (2021). Supportive Employment Practices: Perspectives of Autistic Employees. *Adv in Autism*, 7(1).
<https://doi.org/10.1108/AIA-09-2019-0029>

Advances in Neurodevelopmental Disorders

Mallise, C.A., **Lane, A.E.**, Murphy, V.E., Woolard, A., Whalen, O.M., Gibson, P. G., Karayanidis, F., Campbell, L. E. (2021). Developmental Profiles of Infants with an Elevated Likelihood of Autism Who Were Born to Mothers with Asthma: a Case Series. *Adv Neurodev Disord* 5, 473–487 (Altmetric=1).
<https://doi.org/10.1007/s41252-021-00221-x>

Australasian Journal of Early Childhood

Mozolic-Staunton, B., **Barbaro, J.**, Yoxall, J., & Donnelly, M. (2021). Monitoring children's development in early childhood education settings to promote early detection of autism. *Australasian Journal of Early Childhood*, 46(2), 163–178 (1 cite [79th percentile], 1.13 FWCI).
<https://doi.org/10.1177/1836939121998085>

Autism

Goldfarb, Y., Zafrani, O., **Hedley, D.**, Yaari, M., & Gal, E. (2021). Autistic adults' subjective experiences of hoarding and self-injurious behaviors. *Autism*, 25(5), 1457–1468 (Altmetric=26).
<https://doi.org/10.1177/1362361321992640>

Smith, J., Sulek, R., Abdullahi, I., Green, C. C., Bent, C. A., **Dissanayake, C.**, & Hudry, K. (2021). Comparison of mental health, well-being and parenting sense of competency among Australian and South-East Asian parents of autistic children accessing early intervention in Australia. *Autism*, 25(6), 1784–1796 (Altmetric=1).
<https://doi.org/10.1177/13623613211010006>

Spoor, J. R., **Bury, S. M.**, & **Hedley, D.** (2021). Non-autistic employees' perspectives on the implementation of an autism employment programme. *Autism*, 25(8), 2177–2188 (Altmetric=14 [top 25%]).
<https://doi.org/10.1177/13623613211012880>

Unwin, K. L., Powell, G., & Jones, C. R. (2021). The use of Multi-Sensory Environments with autistic children: Exploring the effect of having control of sensory changes. *Autism*, online ahead of print (Altmetric=21 [top 25%]).
<https://doi.org/10.1177/13623613211050176>

Autism in Adulthood

Flower, R. **Dickens, L.** & **Hedley, D.** (2021). Barriers to employment: Raters' perceptions of male autistic and non-autistic candidates during a simulated job interview and the impact of diagnostic disclosure. *Autism in Adulthood*, 3(4) (Altmetric=21 [top 25%]).
<https://doi.org/10.1089/aut.2020.0075>

Mantzas, J., **Richdale, A.L.**, Adikari, A., **Lowe, J.**, **Dissanayake, C.** (2021). What is autistic burnout? A thematic analysis of posts on two online platforms. *Autism in Adulthood*, 4(1) (Altmetric = 315 [top 5%]).
<https://doi.org/10.1089/aut.2021.0021>

Autism Research

Hedley, D., Hayward, S. M., **Denney, K.**, Uljarević, M., **Bury, S.**, **Sahin, E.**, Brown, C. M., Clapperton, A., **Dissanayake, C.**, Robinson, J., Trollor, J., & Stokes, M. A. (2021). The association between COVID-19, personal wellbeing, depression, and suicide risk factors in Australian autistic adults. *Autism Research*, 14(12), 2663–2676 (Altmetric=2).
<https://doi.org/10.1002/aur.2614>

Huang, Y., Arnold, S., Foley, K. R., **Lawson, L. P.**, **Richdale, A. L.**, & Trollor, J. N. (2021). Factors associated with age at autism diagnosis in a community sample of Australian adults. *Autism Research*, 14(12), 2677–2687 (Altmetric=21 [top 25%]).
<https://doi.org/10.1002/aur.2610>

Licari, M. K., Varcin, K., Hudry, K., Leonard, H. C., Alvares, G. A., Pillar, S. V., Stevenson, P. G., Cooper, M. N., Whitehouse, A., & **AICES Team** (2021). The course and prognostic capability of motor difficulties in infants showing early signs of autism. *Autism Research*, 14(8), 1759–1768 (1 cite [65th percentile]; Altmetric=17 [top 25%]).
<https://doi.org/10.1002/aur.2545>

Muniandy, M., **Richdale, A. L.**, Arnold, S., Trollor, J. N., & **Lawson, L. P.** (2021). Inter-relationships between trait resilience, coping strategies, and mental health outcomes in autistic adults. *Autism Research*, 14(10), 2156–2168 (Altmetric=3).
<https://doi.org/10.1002/aur.2564>

BMJ Open

Masi, A., **Dissanayake, C.**, Alach, T., Cameron, K., Fordyce, K., Frost, G., Grove, R., Heussler, H., Silove, N., Sulek, R., Tucker, M., Williams, K., & Eapen, V. (2021). Clinical outcomes and associated predictors of early intervention in autism spectrum disorder: a study protocol. *BMJ open*, 11(8), e047290 (2 cites [78th percentile], 1.13 FWCI; Altmetric=1).
<https://doi.org/10.1136/bmjopen-2020-047290>

Child Psychiatry & Human Development

DeBoth, K. K., Reynolds, S., Lane, S. J., Carretta, H., Lane, A. E., & Schaaf, R. C. (2021). Neurophysiological Correlates of Sensory-Based Phenotypes in ASD. *Child psychiatry and human development*. Advance online publication. <https://doi.org/10.1007/s10578-021-01266-8>

Cell

Yap, C. X., Henders, A. K., Alvares, G. A., Wood, D., Krause, L., Tyson, G. W., Restuadi, R., Wallace, L., McLaren, T., Hansell, N. K., Cleary, D., Grove, R., Hafekost, C., Harun, A., Holdsworth, H., Jellet, R., Khan, F., Lawson, L. P., Leslie, J., Frenk, M. L., ... Muniandy, M., ... Dissanayake, C., ... Gratten, J. (2021). Autism-related dietary preferences mediate autism-gut microbiome associations. *Cell*, 184(24), 5916–5931. e17 (5 cites [89th percentile], 2.15 FWCI; Altmetric=2411 [top 5%]). <https://doi.org/10.1016/j.cell.2021.10.015>

Clinical Psychology Review

Chetcuti, L., Uljarević, M., Ellis-Davies, K., Hardan, A. Y., Whitehouse, A., Hedley, D., Putnam, S., Hudry, K., & Prior, M. R. (2021). Temperament in individuals with Autism Spectrum Disorder: A systematic review. *Clinical psychology review*, 85, 101984 (3 cites [78th percentile]; 1.21 FWCI; Altmetric=22 [top 25%]). <https://doi.org/10.1016/j.cpr.2021.101984>

Equality, Diversity and Inclusion: An International Journal

Spoor, J., Flower, R., Bury, S., & Hedley, D. (2021). Employee engagement and commitment to two Australian autism employment programs: Associations with workload and perceived supervisor support. *Equality, Diversity and Inclusion*, 41(3) (Altmetric=1). <https://doi.org/10.1108/EDI-05-2020-0132>

Frontiers in Neurology

Gabis, L.V., Gross, R., Barbaro, J. (2021). Personalized Precision Medicine in Autism Spectrum Related Disorders. *Frontiers in Neurology*, 12 (Altmetric=2). <https://doi.org/10.3389/fneur.2021.730852>

Frontiers in Pediatrics

Barbaro, J., Masi, A., Gilbert, M., Nair, R., Abdullahi, I., Descallar, J., Dissanayake, C., Eastwood, J., Hasan, I., Jalaludin, B., Karlov, L., Khan, F., Kohlhoff, J., Liaw, S. T., Lingam, R., Mendoza Diaz, A., Ong, N., Tam, C., Unwin, K., Woolfenden, S., ... Eapen, V. (2021). A Multistate Trial of an Early Surveillance Program for Autism Within General Practices in Australia. *Frontiers in Pediatrics*, 9 (Altmetric=1). <https://doi.org/10.3389/fped.2021.640359>

Frontiers in Psychology

Mallise, C. A., Murphy, V. E., Campbell, L. E., Woolard, A. J., Whalen, O. M., Milton, G., Mattes, J., Collison, A., Gibson, P. G., Karayanidis, F., & Lane, A. E. (2021). Early Sensory and Temperament Features in Infants Born to Mothers With Asthma: A Cross-Sectional Study. *Frontiers in psychology*, 12, 713804 (Altmetric=3). <https://doi.org/10.3389/fpsyg.2021.713804>

International Journal of Language and Communication Disorders

Sulek, R., Smith, J., Bent, C.A., Hudry, K., Trembath, D., Vivanti, G., & Dissanayake, C. (2021). The utility of LENA as an indicator of developmental outcomes for young children with autism. *International Journal of Language and Communication Disorders*, 57(1), 103-111. <https://doi.org/10.1111/1460-6984.12678>

Harper-Hill, K., Trembath, D., Clark, M., Bruck, S., Saggars, B. (2021). Meeting the communication needs of students on the autism spectrum in Australian classrooms: Adjustments reported by educators and specialists. *International Journal of Language and Communication Disorders*, 23(2), 191-200 (Altmetric = 5). <https://doi.org/10.1080/17549507.2020.1758786>

JAMA Pediatrics – The Science of Child and Adolescent Health

Whitehouse, A., Varcin, K. J., Pillar, S., Billingham, W., Alvares, G. A., Barbaro, J., Bent, C. A., Blenkley, D., Boutrus, M., Chee, A., Chetcuti, L., Clark, A., Davidson, E., Dimov, S., Dissanayake, C., Doyle, J., Grant, M., Green, C. C., Harrap, M., Iacono, T., ... Sadka, N., ... Hudry, K. (2021). Effect of Preemptive Intervention on Developmental Outcomes Among Infants Showing Early Signs of Autism: A Randomized Clinical Trial of Outcomes to Diagnosis. *JAMA pediatrics*, 175(11), e213298 (7 cites [98th percentile], 9.33 FWCI; Altmetric = 2035 [top 5%]). <https://doi.org/10.1001/jamapediatrics.2021.3298>

Journal of Autism and Developmental Disorders

Baker, E. K., Arora, S., Amor, D. J., Date, P., Cross, M., O'Brien, J., Simons, C., Rogers, C., Goodall, S., Slee, J., Cahir, C., & Godler, D. E. (2021). The Cost of Raising Individuals with Fragile X or Chromosome 15 Imprinting Disorders in Australia. *Journal of autism and developmental disorders*. Advance online publication. (Altmetric=10 [top 25%]). <https://doi.org/10.1007/s10803-021-05193-4>

Gal, E., Gal-Mishael, R., Vissoker, R. E., Hedley, D., Bury, S. M., & Stolar, O. (2021). Eating Challenges in Children with Autism Spectrum Disorder: Development and Validation of the "Aut-Eat" Questionnaire (AEQ). *Journal of autism and developmental disorders*, 52(2), 811–822 (1 cite [78th percentile]; 1.05 FWCI; Altmetric=1). <https://doi.org/10.1007/s10803-021-04978-x>

Marciano, H., Gal, E., Kimchi, R., Hedley, D., Goldfarb, Y., & Bonne, Y. S. (2021). Visual Detection and Decoding Skills of Aerial Photography by Adults with Autism Spectrum Disorder (ASD). *Journal of autism and developmental disorders*, 52(3), 1346–1360 (Altmetric=5). <https://doi.org/10.1007/s10803-021-05039-z>

Shrestha, R., Barbaro, J., & Dissanayake, C. (2021). Changes in Knowledge on the Signs of Autism in Young Children (11-30 Months) among Female Community Health Volunteers in Nepal. *Journal of autism and developmental disorders*, 52(1), 219–239 (1 cite [94th percentile]). <https://doi.org/10.1007/s10803-021-04944-7>

Waddington, H., Shepherd, D., van der Meer, L., Powell-Hector, N., Wilson, E., & **Barbaro, J.** (2021). Brief Report: Training New Zealand Well Child/Tamariki Ora Nurses on Early Autism Signs Using the Social Attention and Communication Surveillance-Revised. *Journal of autism and developmental disorders*, 1–8. (Altmetric=2).
<https://doi.org/10.1007/s10803-021-05344-7>

Journal of Medical Internet Research

Tzelepis, F., Mitchell, A., Wilson, L., Byrnes, E., **Haschek, A.**, Leigh, L., & Oldmeadow, C. (2021). The Long-Term Effectiveness of Internet-Based Interventions on Multiple Health Risk Behaviors: Systematic Review and Robust Variance Estimation Meta-analysis. *Journal of medical Internet research*, 23(12), e23513 (Altmetric=5).
<https://doi.org/10.2196/23513>

Journal of Occupational Therapy, Schools, & Early Intervention

Ray, K., Dally, K., & **Lane, A. E.** (2021). Impact of a co-taught handwriting intervention for kindergarten children in a school setting: A pilot, single cohort study. *Journal of Occupational Therapy, Schools, & Early Intervention*.
<https://doi.org/10.1080/19411243.2021.1975604>

Lancet

Lord, C., Charman, T., Havdahl, A., Carbone, P., Anagnostou, E., Boyd, B., Carr, T., de Vries, P. J., **Dissanayake, C.**, Divan, G., Freitag, C. M., Gotelli, M. M., Kasari, C., Knapp, M., Mundy, P., Plank, A., Scahill, L., Servili, C., Shattuck, P., Simonoff, E., ... **Jellet, R.**, ... McCauley, J. B. (2021). The Lancet Commission on the future of care and clinical research in autism. *The Lancet*, 399 (10321) (4 cites [99th percentile]; 40.89 FWCI; Altmetric=513 [top 5%]).
[https://doi.org/10.1016/S0140-6736\(21\)01541-5](https://doi.org/10.1016/S0140-6736(21)01541-5)

Medical Journal of Australia

Hedley, D., Stokes, M. A., & Trollor, J. (2021). Suicide by young Australians, 2006-2015: A cross-sectional analysis of national coronial data. *Medical Journal of Australia*, 214 (3), 133-139 [Letter to the editor] (1 cite [80th percentile], 1.35 FWCI).
<https://doi.org/10.5694/mja2.51359>

Molecular Autism

Yap, C.X., Alvares, G.A., Henders, A.K., Lin, T., Wallace, L., Farrelly, A., McLaren, T., Berry, J., Vinkhuyzen, A.A.E., Trzaskowski, M., Zeng, J., Yang, Y., Cleary, D., Grove, R., Hafekost, C., Harun, A., Holdsworth, H., **Jellet, R.**, Khan, F., **Lawson, L.P.**, Leslie, J., Frenk, M.L., Masi, A., Mathew, N.E., **Muniandy, M.**, Nothard, M., Visscher, P.M., Dawson, P.A., **Dissanayake, C.**, Eapen, V., Heussler, H.S., Whitehouse, A.J.O., Wray, N.R. & Gratten, J. (2021). Analysis of common genetic variation and rare CNVs in the Australian Autism Biobank. *Molecular Autism*, 12(12) (1 cite [73rd percentile], 0.86 FWCI; Altmetric=15 [top 25%]).
<https://doi.org/10.1186/s13229-020-00407-5>

The Journal of Asthma

Mallise, C. A., Murphy, V. E., Karayanidis, F., Armstrong, H., Whalen, O. M., Woolard, A. J., Gibson, P. G., Mattes, J., Collison, A., **Lane, A. E.**, & Campbell, L. E. (2021). Parenting stress in mothers with asthma during the postpartum period (Altmetric=1).
<https://doi.org/10.1080/02770903.2021.1993246>

Personality & Social Psychology Bulletin

Thomas, E. F., McGarty, C., Louis, W. R., Wenzel, M., **Bury, S.**, & Woodyatt, L. (2021). It's About Time! Identifying and Explaining Unique Trajectories of Solidarity-Based Collective Action to Support People in Developing Countries. *Personality & social psychology bulletin*, 1461672211047083. Advance online publication (Altmetric=9 [top 25%]).
<https://doi.org/10.1177/01461672211047083>

Physical & Occupational Therapy in Pediatrics

Sheedy, A. J., Brent, J., Dally, K., Ray, K., & **Lane, A. E.** (2021). Handwriting Readiness among Digital Native Kindergarten Students. *Physical & occupational therapy in pediatrics*, 41(6), 655–669 (Altmetric=2).
<https://doi.org/10.1080/01942638.2021.1912247>

PLOS ONE

Hedley, D., Uljarević, M., Cai, R. Y., **Bury, S.**, Stokes, M. A., & Evans, D. W. (2021). Domains of the autism phenotype, cognitive control, and rumination as transdiagnostic predictors of DSM-5 suicide risk. *PloS one*, 16(1), e0245562 (2 cites [79th percentile], 1.31 FWCI).
<https://doi.org/10.1371/journal.pone.0245562>

Reading and Writing

Ray, K., Dally, K., Rowlandson, L. Long Tam, K., & Lane, A. E. (2021). The relationship of handwriting ability and literacy in kindergarten: a systematic review. *Reading and Writing*, 35, 1119–1155 (Altmetric=75 [top 5%]).
<https://doi.org/10.1007/s11145-021-10224-8>

Reading Research Quarterly

Ray, K., Dally, K., Colyvas K, & **Lane, A. E.** (2021). The effects of a whole- class kindergarten handwriting intervention on early reading skills. *Reading Research Quarterly*, 56(S1), S193-S207 (2 cites [92nd percentile], 3.54 FWCI; Altmetric=146 [top 5%]).
<https://doi.org/10.1002/rrq.395>

Research in Autism Spectrum Disorders

Barbaro, J. & Freeman, N.C. (2021). Investigating gender differences in the early markers of Autism Spectrum Conditions (ASC) in infants and toddlers. *Research in Autism Spectrum Disorders*, 83, 101745 (Altmetric=11 [top 25%]).
<https://doi.org/10.1016/j.rasd.2021.101745>

Mazurek, M., & **Richdale, A. L.** (2021). Editors' Prologue and Introduction to the Special Issue. *Research in Autism Spectrum Disorders*, 88, 101850 (Altmetric=1).
<https://doi.org/10.1016/j.rasd.2021.101850>

Muniandy, M., **Richdale, A.L.**, Arnold S.R.C., Trollor, J.N., & **Lawson, L.P.** (2021). Factor Structure and Psychometric Properties of the Brief COPE in Autistic Adults. *Research in Autism Spectrum Disorders*, 84, 101764 (3 cites [85th percentile], 1.9 FWCI; Altmetric=16 [top 25%]).
<https://doi.org/10.1016/j.rasd.2021.101764>

Navarro, P. B., Martinez, M.J., Javaloyes, A., Belda C., Aguilar C., del Mar Inda, M., **Richdale, A.L.**, Muriel, J., Morales, D., & Peiro A.M. (2021). Interplay of circadian clock and melatonin pathway gene variants in adults with autism, intellectual disability and sleep problems. *Research in Autism Spectrum Disorders*, 81, 101715 (1 cite [74th percentile]; Altmetric=6 [top 25%]).
<https://doi.org/10.1016/j.rasd.2020.101715>

Roussis, S., **Richdale, A.**, Katz, N., Malow, B.A., **Barbaro, J.**, & **Sadka, N.** (2021). Behaviour, cognition, and autism symptoms and their relationship with sleep problem severity in young children with autism spectrum disorder. *Research in Autism Spectrum Disorders*, 83, 101743 (2 cites [85th percentile], 1.9 FWC], Altmetric=11 [top 25%]). <https://doi.org/10.1016/j.rasd.2021.101743>

Shrestha, R., **Dissanayake, C.**, & **Barbaro, J.** (2020). Caregivers' knowledge of autism in a local peri-urban community of Nepal: A cross-sectional study in Kirtipur, Kathmandu. *Research in Autism Spectrum Disorders*, 80, 101696 (2 cites [85th percentile], 1.9 FWC], Altmetric=1). <https://doi.org/10.1016/j.rasd.2020.101696>

Research in Developmental Disabilities

Shrestha, R., **Dissanayake, C.**, & **Barbaro, J.** (2021). Implementing and evaluating Social Attention and Communication Surveillance (SACS) to prospectively identify autism in very young children in Nepal. *Research in Developmental Disabilities*, 115, 104013 (Altmetric=2). <https://doi.org/10.1016/j.ridd.2021.104013>

Unwin, K. L., Powell, G., & Jones, C. (2021). A sequential mixed-methods approach to exploring the experiences of practitioners who have worked in multi-sensory environments with autistic children. *Research in developmental disabilities*, 118, 104061 (1 cite [75th percentile], 0.99 FWC]; Altmetric=17 [top 25%]). <https://doi.org/10.1016/j.ridd.2021.104061>

Research on Child and Adolescent Psychopathology

Chetcuti, L., Uljarević, M., Varcin, K. J., Boutrus, M., Pillar, S., Dimov, S., **Barbaro, J.**, **Dissanayake, C.**, Green, J., Wan, M. W., Segal, L., Slonims, V., Whitehouse, A., Hudry, K., & AICES Team (2021). Caregiver Psychological Distress Predicts Temperament and Social-Emotional Outcomes in Infants with Autism Traits (1 cite [76th percentile], 1.01 FWC]; Altmetric=2). <https://doi.org/10.1007/s10802-021-00838-5>

Review Journal of Autism and Developmental Disorders

Woolard, A., **Lane, A. E.** Campbell, L. E., Whalen, O., Swaab, L., Karayanidis, F., Barker, D., Murphy, V., Benders, T. (2021). Infant and child-directed speech used with infants and children at-risk or diagnosed with autism spectrum disorder: A scoping review. *Review Journal of Autism and Developmental Disorders* (Altmetric=7 [top 25%]). <https://doi.org/10.1007/s40489-021-00253-y>

Sleep Medicine

Shui, A. M., **Richdale, A. L.**, & Katz, T. (2021). Evaluating sleep quality using the CSHQ-Autism. *Sleep medicine*, 87, 69–76 (Altmetric=2). <https://doi.org/10.1016/j.sleep.2021.08.022>

Book Chapters

Uljarević, M., **Hedley, D.**, Linkovski, O., & Leekam, S. R. (2021). Underlying mechanisms of restricted and repetitive behaviors across typical and atypical development. In E. Gal & N. Yirmiya (Eds.), *Repetitive and Restricted Behaviors and Interests in Autism Spectrum Disorders: From Neurobiology to Behavior* (pp. 61-75). New York: Springer. https://doi.org/10.1007/978-3-030-66445-9_5

Bury, S. M., **Hedley, D.**, & Uljarević, M. (2021). Restricted, repetitive behaviours and interests in the workplace: Barriers, advantages, and an individual difference approach to autism employment. In E. Gal & N. Yirmiya (Eds.), *Repetitive and Restricted Behaviors and Interests in Autism Spectrum Disorders: From Neurobiology to Behavior* (pp. 253-270). New York: Springer. https://doi.org/10.1007/978-3-030-66445-9_15

Lane A. E. (2021). Sensory Subtypes in Autism Spectrum Disorder. In: Gal E., Yirmiya N. (eds) *Repetitive and Restricted Behaviors and Interests in Autism Spectrum Disorders. Autism and Child Psychopathology Series*. Springer, Cham. https://doi.org/10.1007/978-3-030-66445-9_6

Yaari M., & **Dissanayake C.** (2021). Early Intervention and Restricted, Repetitive Behaviours and Interests. In: Gal E., Yirmiya N. (eds) *Repetitive and Restricted Behaviors and Interests in Autism Spectrum Disorders. Autism and Child Psychopathology Series*. Springer, Cham. https://doi.org/10.1007/978-3-030-66445-9_13

Resources

Richdale, A., **Haschek, A.**, **Lawson, L.**, **Hayward, S.**, & **Abdullahi, I.** Supporting mental health: What young Australian autistic adults tell us. <https://sway.office.com/8lt8lxNRZepuMCFd> (1206 views).

Richdale, A., **Haschek, A.**, **Lawson, L.**, **Hayward, S.**, & **Abdullahi, I.** Anxiety, depression and autistic adults. <https://sway.office.com/zDMN08GzStVfJJqs> (1109 views).

Haschek, A. How can we diagnose autistic girls earlier? <https://sway.office.com/Q5YqmaVAVIWuGvNv> (455 views)

Haschek, A. Workplace Social Challenges Experienced by Employees on the Autism Spectrum. <https://sway.office.com/GFHeToewmLOANFxb> (588 views)

Haschek, A. What Is Autistic Burnout? <https://sway.office.com/g4BUi4DRKxbQ7Vdw> (982 views)

Haschek, A. Knowledge and diagnosis of autism in Nepal. <https://sway.office.com/FgAnfrJfTQJU6PvQ> (302 views)

Haschek, A. What are the links between COVID-19, wellbeing, depression, and suicide risk factors in Australian autistic adults? <https://sway.office.com/mNhGpXBZUgwgqmr0> (1131 views)

Richdale, A. All Things Sleep. Life on the Spectrum Podcasts. <https://doi.org/10.26181/17082734.v1>

Richdale, A. Sleep and Autism. Autism Spectrum Australia (Aspect) Podcasts <https://www.autismspectrum.org.au/about-autism/podcasts>

Hill, K., **Barbaro, J.**, Murphy, D., Stokes, M., Chan, C., & **Hedley, D.** (2021). The Suicide Response Project. <https://www.suicideresponseproject.com>

Resources (cont)

Bury, S. M., Hayward, S. M., Dissanayake, C., & Hedley, D. Supporting a neurodiverse workforce A mental health and well being online training course.
<https://learn.otarc.com.au/>

Reports

Date, P., Denham, M., Gilbert, M., Ihsen, E., Haschek, A., Hedley, D., Lane, A., Laughton, M., Leahy, M., Murphy, D., & Nair, R. *Health, Wellbeing & Suicide Prevention in Autism: Bringing Autistic People, Researchers and Health Professionals Together. Abstracts and Transcripts.*
<https://doi.org/10.26181/17082734>

Dissanayake, C., Barbaro, J., Sadka, N., Barnett, T., & the SACS-R Team. *Developmental Surveillance for Autism: Final Report*, Brisbane Autism CRC.

Dissanayake, C., Bhojti, A., Capes, K., Jones, C., & Haschek, A. *La Trobe University Olga Tennison Autism Research Centre (OTARC) response to the NDIS's proposed Early Childhood Early Intervention Reset.*

Dissanayake, C., Capes, K., Barbaro, J., Jones, C., Sadka, N., Kennedy, L., Gilbert, M., & Haschek, A. *La Trobe University Olga Tennison Autism Research Centre (OTARC) Feedback on Consultation paper: Interventions for children on the autism spectrum.*

Richdale, A. L., Haschek, A., & Chetcuti, L. *Feedback on the Productivity Commission Report on Mental Health.*

Richdale, A. L., & Haschek, A. *Comment on the Draft National Preventive Health Strategy 2021-2030.*

Richdale, A., Haschek, A., Chetcuti, L., Lawson, L. *Longitudinal Study of Australian School Leavers with Autism (SASLA): Final Report*, Brisbane, Autism CRC.

Richdale, A. L., Hedley, D., Haschek, A., Chetcuti, L., Radovini, A., Saunders, F., Ball, R., Bury, S., Mantzalas, J., Fisher, C. A., Stokes, M., Lawson, L. P., & Morris, E. *La Trobe University Olga Tennison Autism Research Centre (OTARC) response to the Select Committee on Mental Health and Suicide Prevention*
<https://doi.org/10.26181/605914d9aabe4>
(302 views, 157 downloads).

Conference papers and posters

INTERNATIONAL SOCIETY FOR AUTISM RESEARCH ANNUAL MEETING, VIRTUAL, MAY 2021

Andrews, H., **Hedley, D., & Bury, S. M.** *Self-determination as a Mediator Between Autism Traits and Quality of Life: Exploration of a parallel mediation model.*

Arnold, S., Huang, Y., Higgins, J., Hwan, Y. I., **Richdale, A., Trollor, J., & Lawson, L.** *The Impact of Diagnosis Scale – Revised (IODS-R).*

Barbaro, J., Sadka, N., Beattie, E., & Dissanayake, C. *Utilising a Mobile Application for the Early Detection of Autism in Infants and Toddlers: Asdetect.*

Dissanayake, C., & Cliffe, R. H. *Comparative Outcomes of Young Minimally Verbal and Verbal Autistic Children Following Receipt of Group-Based Early Start Denver Model (G-ESDM).*

Hedley, D., den Houting, J., Hayward, S., Uljarević, M., Bury, S. M., Lawson, L., Clapperton, A., Haschek, A., Dissanayake, C., Robinson, J., Trollor, J., & Stokes, M. A. *The buffering hypothesis of suicide risk in young autistic adults: Does mental wellbeing buffer the effect of depression on suicidal ideation?*

Hedley, D., Batterham, P., Gallagher, E., Denney, K., Hayward, S., Uljarević, M., Bury, S. M., Clapperton, A., Robinson, J., Trollor, J., & Stokes, M. A. *Development of the Suicide Ideation Attributes Scale-Modified (SIDAS-M) for autistic adults.*

Huang, Y., Arnold, S., Foley, K-R., **Lawson, L., Richdale, A., & Trollor, J.** *Predictors of age at diagnosis in a community sample of Australian adults.*

Kawashima, H., **Dissanayake, C., Hedley, D.,** Kezuka, E., Okuno, M. *Validation of the Autism Detection in Early Childhood-Japanese (ADEC-J).*

Lowe, J., Rumbold, B., & **Dissanayake, C.** *Autistic Adults' Experiences with Palliative Care and End-of-Life Services.*

Mantzalas, J., **Richdale, A.,** Adikari, A., Lowe, J., & **Dissanayake, C.** *What Is Autistic Burnout? a Thematic Analysis of Autistic Adults' Online Forum and Twitter Posts.*

Richdale, A. L., Lawson, L., Haschek, A., Hayward, S., Abdullahi, I., & Morris, E. *The Role of Fatigue and Social Wellbeing in Depressive Symptomatology in Autistic Older Adolescents and Young Adults.*

Whitehouse, A. J., **Barbaro, J., Dissanayake, C.,** Iacono, T., Pillar, S., Slonims, V., Wan, M. W., Varcin, K. J., Wray, J., Green, J., Hudry, K. *Developmental Outcomes Following a Randomised Controlled Trial of a Pre-Emptive Intervention for Infants Showing Early Signs of Autism: A Two Year Follow-up.*

Yap, C. X., Henders, A. K., Alvares, G. A., Wood, D., Krause, L., Tyson, G. W., ... **Dissanayake, C.,** ... Gratten, J. (2021). *Restricted Diet Drives Autism-Gut Microbiome Associations.*

Unwin, K., Underwood, J., & Hall, J. *Substance Use Disorder in Autistic Adults: A Cross-Sectional Study of a National Mental Health Database.* Oral presentation as part of a panel on Substance Use Disorders in Autistic Adults.

ASFAR MENTAL WELLBEING & SUICIDE PREVENTION IN AUTISM: BRINGING AUTISTIC PEOPLE, RESEARCHERS AND HEALTH PROFESSIONALS TOGETHER (STATE-BASED CONFERENCE, DECEMBER)

Andrews, H., **Hedley, D., & Bury, S.** *Self-determination as a mediator between autism traits and quality of life.*

Brown, C. M., **Hedley, D.,** Fuller-Tyszkiewicz, M., Hooley, M., & Stokes, M. A. *Personal Wellbeing and Stress in Autistic Adults: Before and During COVID-19.*

Bury, S. M., Hayward, S. M., **Dissanayake, C., & Hedley, D.** *Utilising lived experience and co-design to develop autism specific workplace mental health training.*

Cooke, K., Ridgway, K., Westrupp, E., **Hedley, D.**, Hooley, M., & Stokes, M. A. Interpersonal Violence in Autism: Prevalence, Risk Factors, and Outcomes of Victimization.

Denney, K., Stokes, M. A., Hayward, S. M., Nicholas, D., Clapperton, A., **Dissanayake, C.**, Robinson, J., Trollor, J., Uljarević, M., & **Hedley, D.** *Exploring autistic people's perspectives on their use of, and barriers to mental healthcare access and services in Australia.*

Lowe, J., Rumbold, B., & **Dissanayake, C.** *Suicidal Ideation as a Grief Response Among Autistic Adults.*

Finn, M., Flower, R., & **Hedley, D.** *A Qualitative Exploration of the Impact of Camouflaging Behavior on the Mental Health and Wellbeing of Autistic People, Experienced During a Job Interview.*

Hill, K., Chan, C., Murphy, D., **Barbaro, J.**, & **Hedley, D.** *Co-design of a Community-based Autism and LGBTIQ+ Inclusive Suicide Prevention Education Tool.*

Sahin, E., **Denney, K.**, Turner, K., Sanguino, H., **Bury, S. M.**, Uljarević, M., Clapperton, A., **Dissanayake, C.**, Robinson, J., Trollor, J., Stokes, M. A., McMorris, C., & **Hedley, D.** *Suicidal Behaviour in Australian and Canadian Children, Adolescents, and Adults on the Autism Spectrum.*

Santomauro, D. F., **Hedley, D.**, **Sahin, E.**, Ferrari, A. J., & Stokes, M. A. *The global burden of suicide among people on the autism spectrum.*

OTHER CONFERENCES

Barbaro, J., **Sadka, N.**, **Beattie, E.**, **Dissanayake, C.**, & the **ASDetect team.** Early detection of autism in the home using a mobile application: ASDetect. Aspect Research Centre for Autism Practice (ARCAP) Conference, 21-22 October (Virtual).

Bhohti, A., McAdam, C., Mohitian, S., & **Dissanayake, C.** "We care" parent capacity-building workshops for autism spectrum disorders: Supporting family quality of life. Abstract published in *Journal of Applied research in Intellectual Disabilities*. <https://www.webofscience.com/wos/woscc/full-record/WOS:000668281600187>

Bury, S. M., Spoor, J. R., **Hedley, D.**, Karimi, L., Bartram, T., Nicholas, D., & **Dissanayake, C.** *Promoting Long-Term Employment of Autistic People through Improved Well-being.* Autism@Work Summit, Australia, Virtual Summit, August 24-25.

Clark, M. *Child and parent reported strengths, interests and positive attributes in children on the autism spectrum: Is there alignment?* Autism Futures Early Career Researcher conference ASfAR – August.

Dissanayake, C., & Capes, K. *Embedded Research at the Victorian Autism Specific Early Learning and Care Centre.* Aspect Research Centre for Autism Practice Conference, October.

Lowe, J., Rumbold, B., & **Dissanayake, C.** *Autistic Adults' Experiences with End-of-Life Services, Grief and Bereavement.* Aspect Research Centre for Autism Practice Conference, October.

Hedley, D. *The Suicide Ideation Attributes Scale-Modified (SIDAS-M): A new suicide risk screener designed for autistic adults.* Symposium: Suicide Risk in Youth with Autism:

Assessment, Prevention, and Treatment. IASR/AFSP International Summit on Suicide Research, October 24-27.

Hedley, D. *Suicide Prevention in Autism.* Invited presentation at the ARCAP Conference 2021, October 21-22.

Hedley, D. *Suicide prevention in autism: Risk assessment.* Child & Youth Mental Health Service (CYMHS) & Area Mental Health Service (AMHS) Coordinators Joint Meeting. University of Melbourne, September 2.

Mastin-Purcell, L., **Richdale, A.**, **Lawson, L.**, & Morris, E. *Fused to Thoughts and Trying to Sleep. What's the Link Between Psychological Inflexibility Processes, Pre-Sleep Arousal and Sleep Quality?* ANZ Association for Contextual Behavioral Science (Virtual).

Richdale, A.L. *Sleep and Autism.* Oral presentation (*keynote) at the Dutch National Autism Conference (virtual presentation), March 18-19.

Richdale, A. L. *Sleep problems in autism and other neurodevelopmental disorders.* Oral presentation (*keynote) at the Australian Conference On Neurodevelopmental Disorders (virtual presentation), September 17-18.

Richdale, A. *Sleep problems in autism. What do we know?* In Symposium: Sleep difficulties and their treatment in developmental disorders: What do we know? Sleep DownUnder, Brisbane, QLD, October (Virtual presentation).

Richdale, A.L. *Autism: Moving into Adulthood and Beyond.* Oral presentation (*keynote) at the International Autism Conference: Turkey (virtual), November 5-6.

Muniandy, M., **Richdale, A. L.**, & **Lawson, L.** *Stress and Wellbeing in Autistic Adults: Exploring the Moderating Role of Coping.* Australasian Society for Autism Research (Virtual), November

Waltz, M., **Bury, S.**, Fertig, H., Siedler, A., Leong, D. *Autism and employment: Strategies and alternatives.* Abstract published in *Journal of applied research in intellectual disabilities*. <https://www.webofscience.com/wos/woscc/full-record/WOS:000668281600005>

Unwin, K., Hall, J. & Underwood, J. *Substance Use Disorder in Autistic Adults: A Cross-Sectional Study of a National Mental Health Database.* Oral presentation. Australasian Society for Autism Research regional conference (Virtual), August.

Grants

New

Barbaro, J. (2021-2022). Internal investment Scheme. ECRs and MCRs "Awards" ("ABC" scheme), La Trobe University. Screening for autism during Maternal and Child Health check-ups using SACS-Telehealth. \$44,137.41.

Chan, C., **Hedley, D.**, Hill, K., & Egerton, S. (2021). La Trobe University Social Research Assistance Platform. *Educating bystanders to detect and respond to suicide risk in general and vulnerable populations: Dissemination of an innovative tool.* \$2500

Dissanayake, C., Spoor, J. R., **Hedley, D.,** Karimi, L., Nicholas, D., & Bartram, T. (2021-2024). Australian Research Council. *Promoting long-term employment of autistic Individuals.* \$427,837

Gilbert, M., Barbaro, J., & Sadka, N. (2021). Social Research Assistance, Office of Research Infrastructure, La Trobe University. *ASDetect evaluation study write up.* \$2,583.

Gray, R., **Dissanayake, C.,** Kuntsche, E., Araten-Bergman, T., **Bury, S.,** Bigby, C., **Hedley, D.,** Spoor, J. R., Walkowiak, E., Riordan, B., He, Z., Bonela, A. A., **Lane, A. E.,** Gal, E., Schnitzman, S., Shpigelman, C. N., Schreuer, N., & Baruch, B. (2021-2022). VESKI Study Melbourne Research Partnership. *Enhanced Wellbeing and Social Inclusion in Marginalized Populations: A two country multicomponent project.* \$180, 000.

Lane, A. E., & Chetcuti, L. (2021-2022). Australian Government Department of Industry, Science, Energy and Resources. *Efficacy of Jettproof compression garments for autistic children: a pilot study.* \$100, 255.

Lane, A. E., Wales, K., Leonard, C., **Unwin, K.** & Johnson, T. (2021-2022). Queensland Department of Education. *Best practice guidelines on supports for students with sensory processing challenges.* \$40, 213.

Richdale, A., Barbaro, J., & Sadka, N. (2021). Social Research Assistance, Office of Research Infrastructure, La Trobe University. *Cross-sectional and longitudinal predictors of sleep problems in young autistic children from the ASDetect Cohort.* \$3,100.

Unwin, K. NViTA Science-Engaged Theology fellowship award. University of St Andrews and the John Templeton Foundation. \$7000.

Ongoing

Bury, S. M., Nair, R., Dissanayake, C., Hedley, D. (2020-2021). Untapped Holding Pty Ltd. *Supporting a Neurodiverse Workforce: A Mental Health & Well-being Resource & Training Package – Development of train-the-trainer and online training – Stage I.* \$119, 847

Hedley, D., Clapperton, A., Uljarević, M., Robinson, J., **Dissanayake, C.,** Trollor, J., & Stokes, M. (2020-2022). Suicide Prevention Australia. *Understanding and preventing suicidal behaviour in individuals with Autism Spectrum Disorder.* \$498,914.

Barbaro, J., Eapen, V., **Dissanayake, C.,** Jalaludin, B., et al. (2019-2022). Autism Cooperative Research Centre (Autism CRC) Strategic Project. *A multistate trial of an early surveillance program for autism within General Practices in Australia.* \$881,975

Dissanayake, C., Barbaro, J., Shiell, A., & Williams, K. (2019-2022). NHMRC Project Grant. *School age Outcomes of Children with Autism Spectrum Disorder and Parental Wellbeing: Investigations on the contribution of Method-of-Referral and Age-of-Diagnosis.* \$473,000

Guastella, A., Dawson, G., **Dissanayake, C.** et al. (2017-2021) NHMRC Project Grant. *Oxytocin enhancement of social learning in the treatment of toddlers with autism.* \$1,273,280

Richdale, A. L., Falkmer, T., Harley, D., & Trollor, J. (2014–2021). Autism CRC Core Program 3 Project 3.016RC, *Comprehensive and unique profile of Australian ASD school leavers - Extension.* \$358,420

Richdale, A. L., Falkmer, T., Harley, D., & Trollor, J. (2017–2021). Autism CRC Core Program 3 Project 3.012RC *Base Resource Funding* \$935,000

Students



Ali Morse – PhD Completed

“State-wide implementation of the Social Attention and Communication Surveillance - Revised (SACS-R) in Tasmania”



Hiroko Kawashima – PhD completed

“Promotion of early identification of ASD in rural Japan”



The inaugural Access Ability Academic Award winner Lyndel Kennedy

(OTARC PhD candidate). Lyndel provided ‘above and beyond’ support for students when employed as a casual academic for Psychology and Counselling.

Honours

Student	Topic	Supervisors
Rebekah Benn	How Can Psychologists Better Work With Autistic Adults?	Rebecca Flower Rachel Jellett
Mikaela Finn	Experiences of Autistic People in Job Interviews	Rebecca Flower Darren Hedley
Ellen Richardson	Perceptions of Disability Workplace Accommodations	Rebecca Flower Simon Bury
Azul Hussain	Scale Development and Psychometric Evaluation of the Sensory Observation Autism Rating Scale (SOAR)	Josephine Barbaro Alison Lane Katy Unwin
Madison Chetcuti	Sensory Behaviours in 11-36-month-old Autistic Children: Investigating Associations with Diagnosis, Age and Gender	Josephine Barbaro Alison Lane Katy Unwin
Elisa Pica	Understanding Psychological Inflexibility and Quality of Life	Amanda Richdale Eric Morris
Matthew Strebinos	Psychological Determinant of Emotion Dysregulation	Amanda Richdale Eric Morris

Masters

Student	Topic	Supervisors
Paula Grogan (MPsych, Clin)	Does parental resolution to the diagnosis of ASD impact on the fidelity of parent delivered intervention and treatment outcomes for pre-school children?	Cheryl Dissanayake
Erin Beattie (external)	An examination of social-communication behaviours in infants and toddlers in the general population	N. Freeman (Monash University) Josephine Barbaro
Louise Dickens (MPsych, Clin)	Inter-Relationships Between Autistic traits and Elements of Depression, Sleep Quality, and Fatigue in Autistic Adolescents and Adults: A Network Analysis	Eric Morris Amanda Richdale
Katherine Gore	Autistic Females' Experience in the Workplace	Josephine Barbaro Melissa Gilbert Rebecca Flower Susan M Hayward (University of Melbourne)

PhD

Student	Topic	Supervisors
Gemma Davy	Participation and Quality of Life in Caregivers of School Aged Children with Autism Spectrum Disorder	Josephine Barbaro Cheryl Dissanayake Katy Unwin
Robyn Ball	Improving the competence of mental health practitioners in providing care to their autistic clients	Amanda Richdale Lauren Lawson Eric Morris
Lyndel Kennedy	Factors contributing to higher education success for neurodiverse students	Amanda Richdale Lauren Lawson
Melanie Muniandy	Social Support, coping, and resilience in adolescents and young adults on the autism spectrum	Amanda Richdale Lauren Lawson
Beth Radulski	In partnership with La Trobe University's Department of Social Inquiry: #TakeTheMaskOff: Autistic Performativity and the Neurodiversity Movement	Katie Wright Cheryl Dissanayake
Jane Mantzalas	Characterising autistic burnout and its underlying mechanisms: An exploratory investigation	Amanda Richdale Cheryl Dissanayake
Jennifer Lowe	End-of-Life Service Experiences and Autism Spectrum Disorder	Bruce Rumbold Cheryl Dissanayake
Elly Greenwood	Autism Coming to Hospital: Optimising the care for Inpatients with Autism Spectrum Disorder	Josephine Barbaro Louise Ward Ruby Walter (RMIT)
Dianne Blackwell	Emotional regulation supports for autistic children and their caregivers	Alison Lane Anoo Bhojti (Monash University) Shelly J Lane (Colorado State University)
Clare Kermond	Barriers and facilitators to positive school experiences for Australian secondary school autistic students	Alison Lane Anne Southall
Asmita Mudholkar	Feeding difficulties in young children with a high likelihood of autism	Alison Lane Kristelle Hudry, Larissa Korostenski (John Hunter Hospital)
Tayla Chellew (external)	Finding the lost years: Investigating the early signs of Autism Spectrum Disorder (ASD) in females diagnosed later in life	N. Freeman (Monash University) Josephine Barbaro
Alison Nuske (external)	Exploring the facilitators and barriers to successful transition to university for students on the autism spectrum.	Fiona Rillotta Michelle Bello Amanda Richdale
Karen Ray (external)	Learning to read and write: The role of handwriting fluency	Alison Lane Kerry Dally (University of Newcastle)
Kelsey Philpott- Robinson (external)	PromOTing a therapeutic approach to self-regulation in schools: Getting it "just right"	Alison Lane Carl Leonard (University of Newcastle) Kylie Wales (University of Newcastle)

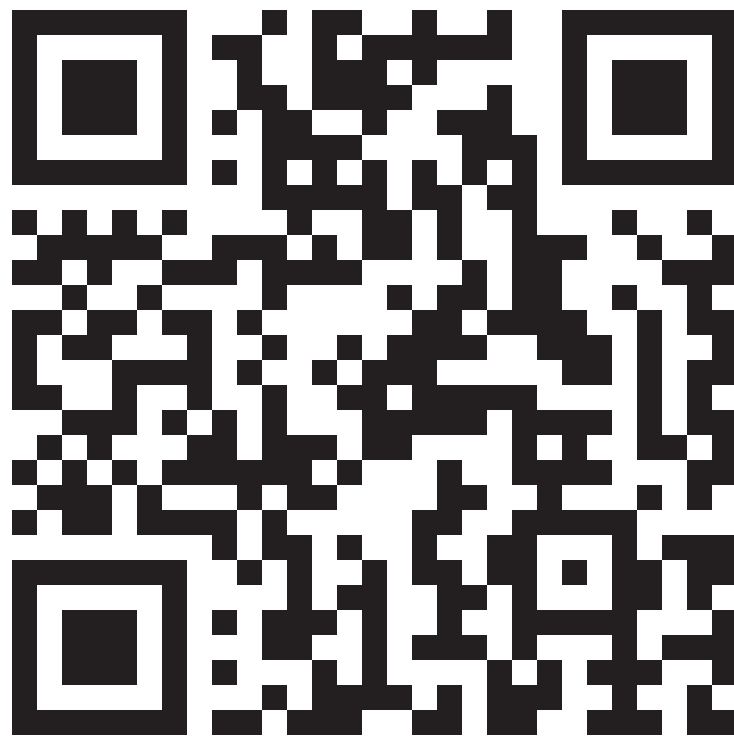
Financial Report

Income: for the period 1st January to 31st December 2021		2020 Total	2021 Total
Research grants		771,148	505,094
Research donations		250,000	-
Commercial income		24,878	42,876
Other grants		-	-
Other donations		51,392	60,705
Foundation transfers		228,879	1,110,000
Internal income/transfers		346,720	277,743
In-kind contributions		362,122	202,649
Investment income		38,434	58,877
Other income		173,933	128,835
Total income		2,247,506	2,386,779

Expenditure: for the period 1st January to 31st December 2021			
Employee salaries and on costs		2,355,197	2,369,375
Academic (continuing and fixed-term staff)		1,531,861	1,573,171
Academic (casual)		40,051	1,818
Administrative (fixed-term staff)		731,372	715,303
Administrative (casual)		51,710	65,565
Other salary costs		203	13,518
Non-salary costs		305,921	206,921
Infrastructure	IT, maintenance, services	17,234	48,483
Depreciation		17,942	9,898
Professional fees	Externally contracted services	-20,538	9,144
Student related	Scholarships, stipends, training	82,406	21,504
General operating	Consumables, stationery, minor equipment	75,025	7,152
Staff (non-salary) costs	Incl. travel, accommodation and incidentals	33,589	21,069
Sundry items and other expenses		100,263	89,672
Total Expenses		2,661,118	2,576,297
Yearly Operating Result		-413,612	-189,518
Prior Year Carry-Forward		25,841	-387,771
Net Operating Result		-387,771	-577,289

La Trobe University also makes a significant in-kind contribution to OTARC in addition to providing financial support

La Trobe in-kind contributions	2020 Total	YTD December 2021
School Support	200,158	202,649
Research Focus Area support	10,000	0
Operating deficit/School contribution	151,964	244,464
Total	362,122.32	447,113



Contact details

Olga Tennison Autism Research Centre

General enquiries

T +61 3 9479 2497

E otarc@latrobe.edu.au

latrobe.edu.au/otarc

facebook.com/OlgaTennisonAutismResearchCentre

twitter.com/OlgaTennison